

# Bonhams



**Natural History**

Los Angeles | May 25, 2021



# Natural History

Los Angeles | Tuesday May 25, 2021 at 10am

## BONHAMS

7601 W. Sunset Boulevard  
Los Angeles CA 90046  
[bonhams.com](http://bonhams.com)

## SALE NUMBER

26878  
Lots 1000 - 1204

## AUCTION INFORMATION

Bonded pursuant to California Civil  
Code Sec. 1812.600;  
Bond No. 57BSBGL0808

**CATALOG:** \$45

## ILLUSTRATIONS

Front Cover: Lot 1076  
Inside Front Cover: Lot 1106  
Inside Back Cover: Lot 1178  
Back Cover: Lot 1082

## PREVIEW

Saturday May 22, 12pm – 5pm  
Sunday May 23, 12pm – 5pm  
Monday May 24, 12pm– 5pm

## INQUIRIES

Tom Lindgren  
Specialist  
Co-consulting Director  
310-469-8567  
[tom.lindgren@bonhams.com](mailto:tom.lindgren@bonhams.com)

Claudia Florian, G.J.G.  
Co-consulting Director  
323-436-5421  
[Claudia.florian@bonhams.com](mailto:Claudia.florian@bonhams.com)

Esther Park  
Administrator/ Cataloguer Trainee  
323-436-5437  
[esther.park@bonhams.com](mailto:esther.park@bonhams.com)

## BIDS

Bid online/APP  
Register to bid online by visiting  
[www.bonhams.com/26878](http://www.bonhams.com/26878)



**Bid through the  
app. Download now  
for android and iOS**

Alternatively, contact our Client  
Services department at:  
[bids.us@bonhams.com](mailto:bids.us@bonhams.com)  
+1 (323) 850 7500

## IMPORTANT NOTICES

Please note that all customers,  
irrespective of any previous activity  
with Bonhams, are required to have  
proof of identity when submitting  
bids. Failure to do this may result in  
your bid not being processed.

For absentee and telephone bids  
we require a completed Bidder  
Registration Form in advance of  
the sale. The form can be found at  
the back of every catalogue and on  
our website at [www.bonhams.com](http://www.bonhams.com)  
and should be returned by email to  
the specialist department or to the  
Client Services department at [bids.us@bonhams.com](mailto:bids.us@bonhams.com). Please note we  
cannot guarantee bids within 24  
hours of the sale.

Lots marked "W" are oversized  
and therefore your purchases may  
be subject to alternative shipping  
and storage methods. For further  
information, please refer to the  
Oversized Lots page.

## COVID-19 SAFETY STANDARDS

Bonhams' galleries are currently  
subject to government restrictions  
and arrangements may be subject  
to change.

**Preview:** Lots will be made  
available for in-person viewing by  
appointment only. Please contact  
the specialist department:  
Esther Park  
[esther.park@bonhams.com](mailto:esther.park@bonhams.com)  
323-436-5437

to arrange an appointment before  
visiting our galleries. In accordance  
with Covid-19 guidelines, it is  
mandatory that you wear a  
face mask and observe social  
distancing at all times. Additional  
lot information and photographs  
are available from the specialist  
department upon request.

**Bidding:** We are unable to offer in-  
person bidding for this auction.

**Payment, Collections & Shipping:**  
We strongly encourage contactless  
payment of invoices prior to  
collection via wire transfer or credit  
card through your MyBonhams  
account. In-person or third-party  
collections from our galleries are  
scheduled in advance with our  
Client Services team.

# Order of Sale

Natural History - Tuesday, May 25 at 10 am

## Fossils.....lots 1000 – 1083

- Dinosauria ..... lots 1000 – 1019
- Marine Reptiles..... lots 1020 – 1022
- Amphibians ..... lot 1023
- Echinoderms ..... lot 1024
- Crustaceans..... lots 1025 – 1028
- Trilobites..... lots 1029 – 1038
- Cephalopods..... lots 1039 – 1059
- Fish ..... lots 1060 – 1070
- Reptile..... lots 1071 – 1072
- Mammals ..... lots 1073 – 1076
- Paleobotany including agatized  
and opalized wood ..... lots 1077 – 1082
- Fossil replicas.....lot 1083

## Amber, Copal, Zoology, Curiosities and Mineral Decor.....lots 1084 – 1127

## The Fossil Shark’s Tooth Jewelry of Ivana Cella.....lots 1128 – 1140

## Minerals including Native Gold (listed alphabetically).....lots 1141 – 1179

## Malachite and Copper Related Minerals.....lots 1180 – 1204

# Regulated Species Materials and CITES Permits

The export of a lot from the United States or import into certain countries may be subject to export or import regulations, licensure and/or other restrictions; in particular, lots containing plant or animal materials such as ivory, rhinoceros horn, tortoiseshell, coral, whalebone or certain types of woods, irrespective of age or value, may require the granting of one or more export or import licenses or certificates, or may be banned from import altogether by some countries. Moreover, the ability to obtain an export license or certificate does not insure the ability to obtain an import license or certificate in another country. Lots that contain such regulated species materials may also not be eligible for exportation or for re-importation into the United States if they are not at least 100 years of age, and, under current law, lots containing African Elephant Ivory may no longer be re-imported into the United States regardless of age. In addition, resales of lots containing certain regulated species materials may be subject to restrictions in some jurisdictions.

Lots noted in the catalog with a **Y** next to the lot number contain one or more such regulated plant or animal materials. **It is the buyer’s responsibility to investigate any such restrictions and to obtain any relevant export or import licenses. Please note that this process is governed by local authorities and may take considerable time. Regardless of any delay in the obtaining of an export or import license or certificate or denial of a license’s or certificate’s issuance, purchased lots shall be paid for in accordance with the Conditions of Sale, and any such delay or denial shall not serve as the basis for cancellation of any sale.** Prospective buyers are advised to obtain information from the relevant regulatory authorities regarding export and import restrictions, requirements, and costs prior to bidding.

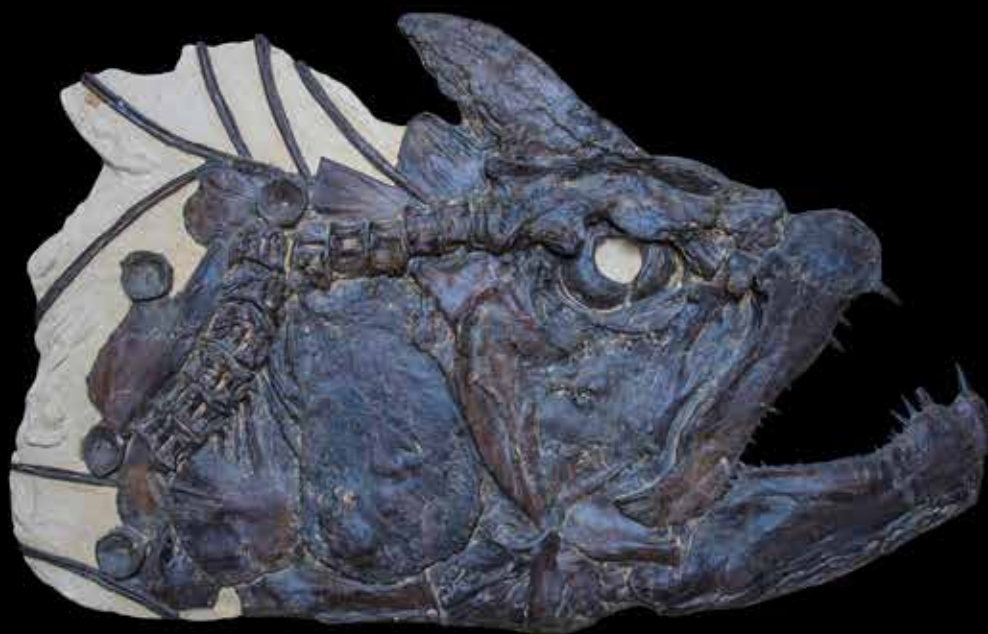
Prospective buyers should also check with their local (e.g. state) regulatory authorities regarding any local restrictions and/or permit requirements that may apply with respect to purchases of regulated species materials, including without limitation purchases of items containing elephant ivory or rhino horn. For example, we are advised that New York buyers of any lot containing elephant or mammoth ivory or rhino horn will be responsible for obtaining a New York State permit before taking possession of the lot within New York State, and that the State of New Jersey has banned the import of items containing elephant or marine mammal ivory or rhino horn into that state.

Upon request, Bonhams can refer the purchaser to a third party agent to assist the purchaser in attempting to obtain the appropriate licenses and/or certificates. However, there is no assurance that any necessary licenses or certificates can be obtained. Please contact the Specialist Department for a suggested list of shipping agents prior to placing a bid if you are uncertain as to whether a lot is subject to export/import license or certificate requirements or related restrictions.

ERA	PERIOD	EPOCH	MILLION YEARS AGO
CENOZOIC	Quaternary	Holocene (Recent)	Present to 0.01
		Pleistocene (Ice Age)	0.01 to 2
	Tertiary	Pliocene	2 to 5
		Miocene	5 to 25
		Oligocene	25 to 38
		Eocene	38 to 55
Paleocene	55 to 65		
MESOZOIC (Age of the Dinosaurs)	Cretaceous		65 to 144
	Jurassic		144 to 213
	Triassic		213 to 248
PALEOZOIC	Permian		248 to 286
	Carboniferous		286 to 360
	Devonian		360 to 408
	Silurian		408 to 438
	Ordovician		438 to 505
	Cambrian		505 to 590

# Fossils

Lots 1000 - 1083





1000



1001

## DINOSAURIA

1000

### FINE NANOTYRANNUS TOOTH

*Nanotyrannus lancensis*

*Cretaceous*

*Lance Creek Formation, Wyoming*

A fine *Nanotyrannus lancensis* dinosaur tooth. This species was first discovered in 1942 and misidentified as *Gorgosaurus*. Reclassified in 1988, scientific debate continues as to its taxonomic classification, as some paleontologists believe that *Nanotyrannus* is, in fact, a juvenile *T. rex*. Measuring 1 7/8 x 5/8 in

\$2,000 - 2,500

1001

### DINOSAUR CLAW

*Spinosaurus aegyptiacus*

*Cenomanian, Middle Cretaceous*

*Kem Kem Region of Southeastern Morocco*

A claw from the hand of *Spinosaurus aegyptiacus* displays two characteristic large grooves along the side. Many incorrectly believe these to be blood grooves. However, the structure, as in modern-day cats and dogs, helped nourish and maintain the sheath of the claw. The sheath would have measured up to one-third longer than the claw bone itself. The present specimen has not been restored. Measuring 3 7/8 in

\$1,500 - 1,800

1002

### ANKYLOSAURID SCUTE

*Denversaurus schlessmani*

*Cretaceous*

*Lance Creek Formation, Wyoming*

The bony plates, or scutes, which covered the back of ankylosaurids like armor, were designed for the protection of this herbivorous dinosaur. Offered is a large *Denversaurus schlessmani* scute.

Measuring 7 x 4 x 1 1/2 in

\$400 - 500

1003

### THERAPOD DINOSAUR TOOTH

*Nanotyrannus lancensis*

*Cretaceous*

*Lance Creek Formation, Wyoming*

A fine theropod tooth. Theropods are a carnivorous bipedal group of dinosaurs characterized by hollow bones and three-toed limbs. Measuring 1 x 1/2 in

\$1,000 - 1,200

To be sold without reserve



1002



1003



1004

1004

**PARTIAL DUCKBILLED DINOSAUR MAXILLA**

*Edmontosaurus annectens*  
Cretaceous

Lance Creek Formation, Wyoming

Discovered on a private ranch in the 67-65-million-year-old Lance Creek Formation in Niobrara County, Wyoming, this partial dinosaur dentary boasts no restoration. *Edmontosaurus annectens* was a very large herbivore that was a favorite food choice for *T. rex*. Sometimes referred to as the *cattle of the Cretaceous*, duckbilled dinosaurs such as this genus are thought to have lived in large herds. This seven-inch long section of the maxilla displays fourteen original teeth and four partial teeth, with replacement teeth forming beneath the exposed teeth. The excellent quality bone is an attractive brown color. Measuring 7 x 5 in

\$1,600 - 2,400

1005

**AFRICAN TYRANNOSAURUS DINOSAUR TOOTH**

*Carcharodontosaurus saharicus*  
Cretaceous  
Morocco

*Carcharodontosaurus* possessed enormous jaws which contained approximately sixty-four long, blade-like, very sharp, serrated teeth. Offered is a fine quality *Carcharodontosaurus* tooth displaying attractive coloration and detailed preservation of serrations along the entirety of both edges. Measuring 4 1/4 x 1 1/2 x 1 in

\$2,500 - 3,500

1006

**LARGE THEROPOD DINOSAUR TOOTH**

*Carcharodontosaurus saharicus*  
Cretaceous  
Sahara Desert, Morocco

A large, complete dinosaur tooth, of *Carcharodontosaurus saharicus*. Known as the *T. rex of Africa*, this dinosaur was a ferocious predator capable of killing large sauropods. Even though *Carcharodontosaurus* was larger than *T. rex*, most of the teeth found are only 1.5 to 2.5 inches long. This complete brown shed tooth displays excellent enamel with some of the knife-like serrations still visible. *Carcharodontosaurus* teeth are much flatter than *T. rex* teeth and were used to shred flesh rather than bite through bone. *Carcharodontosaurus* was older than *T. rex* at 70-80 million years old. The present large, impressive tooth was found in the Sahara Desert of Morocco. Measuring 3 1/2 x 1 1/2 in

\$900 - 1,400



1005



1006



1007

1007

**HADROSAUR TAIL VERTEBRA**

*Edmontosaurus annectens*

*Cretaceous*

*Lance Creek Formation, Niobrara County, Wyoming*

A caudal (tail) vertebra from a duckbilled dinosaur. Hadrosaurs were large herbivores known for the flattened, beak-tipped snout which was evolved for nipping off vegetation. Some scientists theorize that hadrosaurs were able to outrun *T. rex*. Measuring 22 x 9 x 8 in. Height including stand: 24 ¾ in

**\$1,500 - 2,000**

*Offered on a custom metal stand.*

1008

**TYRANNOSAURUS TOOTH**

*Tyrannosaurus rex*

*Cretaceous*

*Hell Creek Formation, Wyoming*

During their lifetimes, Tyrannosaurs' teeth would commonly break off. The present specimen is a tooth which has been shed, probably while feeding. Collected on private ranch land, this excellently preserved tooth exhibits fine serrations and superb enamel. Measuring 2 1/2 in

**\$2,000 - 3,500**



1008





1009

**LARGE TRICERATOPS HORN**

*Triceratops horridus*

*Cretaceous*

*Hell Creek Formation, Wyoming*

*Triceratops* is one of the most recognized of all of the behemoths of the Age of Dinosaurs. Offered is an example of the feature which most closely identifies this famous dinosaur, its horn. The present dark brown specimen is of excellent quality, from a very large, mature individual. In life, the horn would have been covered with keratin (the same material of which human fingernails are formed), increasing its size by 30%; its effectiveness as a defensive weapon can be easily surmised. Discovered on private ranch land, the massive specimen was found with an intact tip. *Measuring 25 1/4 x 10 1/4 x 6 in*

**\$15,000 - 18,000**



1010

**NORTH AMERICAN OVIRAPTOR LEG**

*Chirosstenotes*

*Cretaceous*

*Montana*

*Chirosstenotes* was a carnivorous bird-like dinosaur. The oviraptorid theropod genus displayed a parrot-like head with toothless beak, long, powerful legs and long, narrow fingers. *Chirosstenotes* is theorized to have possessed feathers. It grew to approximately the size of an adult human but weighed much less than the average man. These fascinating dinosaurs lived in North America approximately 80 million years ago. The present beautifully preserved specimen is a nearly complete leg, which would distinguish any vertebrate collection. Offered on a custom metal base. Height measures 30 in

**\$12,000 - 15,000**



1011

1011

**FUSED TRICERATOPS VERTEBRAE**

*Triceratops horridus*

Cretaceous

Hell Creek Formation, Wyoming

Two fused dorsal vertebrae make up this unusual offering.

*Triceratops'* distinctive appearance included three horns and a large bony frill, which, besides giving this creature lasting celebrity, may have served several purposes. Its horns could have been used by this herbivore for uprooting giant prehistoric trees, and its frill for extra protection as the trees fell. Offered are two contiguous fused dorsal vertebrae from *Triceratops horridus*. Measuring 19 1/2 x 16 3/4 x 6 3/4 in

**\$8,000 - 10,000**

1012

**GEM DINOSAUR BONE**

Jurassic

Morrison Formation, Colorado Plateau, Hanksville, Utah

A very unusual gemmy slice of Jurassic Dinosaur bone that fluoresces. Measuring 9 x 6 1/4 x 2 1/4 in

**\$1,250 - 1,500**



1012



1013

1013

**AFRICAN TYRANNOSAURUS TOOTH**

*Carcharodontosaurus saharicus*

*Cretaceous*

*Morocco*

A fine quality *Carcharodontosaurus* tooth displays attractive coloration and detailed preservation of serrations on both edges.

Measuring 3 3/4 x 1 3/4 x 3/4 in

**\$2,000 - 3,000**



1014

1014

**LARGE TYRANNOSAURUS REX TOOTH**

*Tyrannosaurus rex*

*Cretaceous*

*Hell Creek Formation, North Dakota*

Discovered on a private ranch, this large, thick 65-million-year-old *T. rex* tooth displays excellent enamel, typical thin planchet cracks and some interesting feeding wear on the tip. *T. rex* specimens are among those fossils most desired by collectors. The species is, without doubt, the most famous prehistoric animal of all time.

Virtually all *T. rex* teeth found are shed teeth which broke off when an individual was feeding. Measuring 2 1/2 in

**\$4,000 - 6,000**



1015

1015

**ALLOSAURUS DINOSAUR TOOTH IN MATRIX**

*Allosaurus fragilis*

Jurassic

Morrison Formation, Bone Cabin Quarry, Western Wyoming

One of the ferocious carnivores of the Late Jurassic Period, *Allosaurus* was a powerful predator which, like *T. rex*, walked on two legs. Also like *T. rex*, *Allosaurus* possessed small arms with three-fingered hands and sharp claws, and a massive tail. Offered is a nicely preserved tooth of the Jurassic meat-eater, in the original matrix. Matrix measuring 3 1/2 x 2 3/4 x 1 1/2 in; Length of tooth measuring 1 7/8 in

\$2,000 - 2,500

1016

**LARGE TYRANNOSAURUS TOOTH**

*Tyrannosaurus rex*

Cretaceous

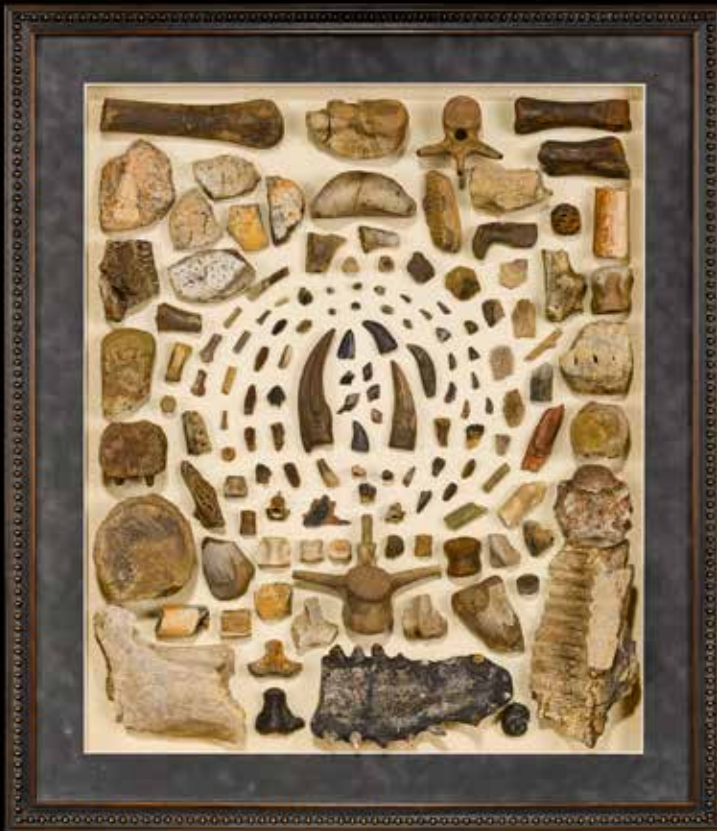
Hell Creek Formation, Wyoming

Discovered on a private ranch, this large, thick 65-million-year-old *T. rex* tooth displays excellent enamel, typical thin planchet cracks and some interesting feeding wear on the tip. *T. rex* specimens are among those fossils most desired by collectors. The species is, without doubt, the most famous prehistoric animal of all time. *T. rex* teeth are very distinct from other theropod dinosaur teeth, as they are thick with sharp serrations on both sides. Virtually all *T. rex* teeth found are shed teeth which broke off when an individual was feeding. Measuring 5 1/2 x 2 1/4 x 1 1/2 in

\$8,000 - 10,000



1016



1017

1017  
**LARGE CRETACEOUS MICROSITE  
 FOSSIL COLLECTION**

*Various species  
 Cretaceous  
 Hell Creek Formation, Weston County,  
 Wyoming*

This extensive collection of small Cretaceous fossils is the result of more than twenty years of collecting from a microsite on a private ranch in Weston County, Wyoming. Comprising 180 individual fossils, including various teeth, claws, small vertebrae, partial jaws, vertebrae, foot elements and unknown bones from dinosaurs and crocodiles of the Late Cretaceous Hell Creek Formation. *Measuring 30 x 26 x 3 in*

**\$10,000 - 12,000**

1018  
**SEVEN RED DINOSAUR BONE  
 CABOCHONS**

*Utah*  
 A group of seven red dinosaur bone cabochons fashioned with the following shapes: rectangular, pear, oval, cushion and free-form. Individual carats weights as follows: 36.72 carats, 28.29 carats, 19.97 carats, 19.76 carats, 19.01 carats, 14.01 carats, 10.30 carats. Each showing excellent cellular structure. The largest cabochon measuring 36.93 x 22.5 x 5.11mm. Total weight approximately 147.5 carats. (7)

**\$500 - 700**  
 To be sold without reserve

1019  
**SEVEN FANCY-COLORED DINOSAUR  
 BONE CABOCHONS**

*Utah*  
 A group of seven fancy colored dinosaur bone cabochons comprising five ovals, one cushion, and one rectangular-shaped with colors of orange, red, grey, and blue, all exhibiting fine cellular structure. Individual carat weights as follows: 30.46 carats, 29.49 carats, 23.18 carats, 20.81 carats, 20.68 carats, 16.49 carats, and 8.71 carats. The largest measuring 33.53 x 18.46 x 5.18mm. Total weight approximately 148.5 carats. (7)

**\$600 - 900**  
 To be sold without reserve



1018

1019



1020

## MARINE REPTILES

1020

### LARGE ICHTHYOSAURUS PADDLE

*Temnodontosaurus trigonodon*

Lower Jurassic

Holzmaden, Germany

A very large section of an ichthyosaur, comprising bones from the shoulder area, vertebrae and a complete paddle in natural matrix. Measuring 26 x 25 x 4 in

\$3,000 - 4,000

1021

### ICHTHYOSAURUS VERTEBRAE

*Temnodontosaurus trigonodon*

Early Jurassic

Holzmaden, Germany

*Temnodontosaurus* was an apex predator of the Early Jurassic seas. Offered are twelve articulated vertebrae from one of the largest ichthyosaur species to have ever existed on Earth. Measuring 22 x 8 x 1 1/2 in

\$1,500 - 2,000



1021



1022

1022

**ICHTHYOSAUR RIB**

*Ichthyosaurus* sp.

Jurassic

Holzmaden, Germany

A marvelous 30-inch *Ichthyosaurus* rib in natural matrix. Measuring 28 x 18 ¾ x ¾ in

\$600 - 800

**AMPHIBIANS**

1023

**LARGE FOSSIL SALAMANDER**

*Chelotriton* sp.

Miocene

Bosnia

An unusual fossil salamander from Eastern Europe. Measuring 10 ½ x 7 ½ x ¾ in

\$800 - 1,200



1023



## ECHINODERMS

1024

### DEVONIAN STARFISH

*Furcaster decheni*

Devonian

Hunsruck Shale, Bundenbach, Germany

Exhibiting pyrite replacement, the arms of this prehistoric starfish are beautifully and symmetrically articulated. *Furcaster decheni* possessed a body disc which extended to the tip of the arms. Measuring 6 ¼ x 5 ½ in



1024

\$600 - 800

To be sold without reserve



1025

## CRUSTACEANS

1025

### EXCEPTIONALLY LARGE FOSSIL CRAYFISH

*Thalassinia squamifera*

Pleistocene

Northern Territories, Australia

A nice example of a classic Australian fossil crustacean. Carefully prepared from a hard siliceous nodule with most of the animal visible. Measuring 12 x 4 x 2 in

\$1,500 - 2,000

1026

### VERY LARGE FOSSIL CRAB

*Harpactocarcinus punctulatys*

Eocene

Italy

A wonderful large fossil crab with superbly well-preserved legs on matrix, from Italy. Measuring 7 ½ x 4 x 5 in

\$2,000 - 2,500



1026



1027



1028

1027

**JURASSIC SHRIMP PAIR – PART AND COUNTERPART**

*Mecochirus longimanus*

Late Jurassic

Solnhofen, Germany

The positive and negative halves of a single large shrimp in natural matrix. Each specimen measuring 17 x 12 in (2)

\$900 - 1,200

1028

**MACROPHTHALMUS CRAB**

*Macrophthalmus*

Pliocene

Madagascar

Superb preparation of the legs recommends this exceptional fossil crab. Measuring 7 x 7 x 5 in

\$1,500 - 2,000



1029



1030



1031

## TRILOBITES

1029

### EXQUISITE SPINY MOROCCAN TRILOBITE

*Ceratonurus*

Devonian

Oumjrane, Morocco

*Ceratonurus* is a rare Devonian spiny trilobite from the Atlas Mountains of Morocco. This complete 3-dimensional dark brown trilobite contrasts nicely with light beige colored matrix. The spectacular, complete trilobite boasts curved horns sloping back from the cephalon and unusually long spines extending from its carapace. *Specimen measuring 1 1/2 in, Matrix measuring 2 x 2 1/2 in*

\$1,200 - 2,000

1030

### HOPLOLICHOIDES TRILOBITE

*Hoplolichoides conicotuberculatus*

Late Ordovician, Early Caradocian

Vivikonna Formation, St. Petersburg Region, Russia

With its *pin-cushion* carapace, few trilobites ever unearthed can be considered stranger than this species of *Hoplolichoides*. Science is still debating over the exact function such a spine-covered outer shell may have served; the logical assumption is that it provided the animal with a degree of protection from the ever-increasing number of predators which filled the Ordovician oceans. *Overall measurements: 5 x 2 1/4 x 1 1/2 in*

\$900 - 1,200

1031

### DEVONIAN MOROCCAN TRILOBITE

*Morocconites malladoides*

Middle Devonian

Oñaten, Morocco

*Morocconites malladoides* is known as the unicorn of trilobites because of its single long upward frontal medial spine. This complete black trilobite also has its hypostome (mouth) displayed beneath its cephalon, excellent compound schizocoel eyes and beautiful contrast against the light gray matrix. *Specimen measuring 3 1/4 in; Matrix measuring 3 x 3 1/2 in*

\$500 - 750

To be sold without reserve



1032

1032

**SPINY RUSSAN TRILOBITE**

*Hoplolichas furcifer*  
Devonian

*Laba River Basin, St. Petersburg, Russia*

The quality of these light brown trilobites is quite stunning, resulting in an animated presentation. *Hoplolichas furcifer* is one of the most unusual and rarer species. This museum quality specimen is positioned on a tan matrix. *Hoplolichas furcifer* is spiny with two barbed horns extending backward from the cephalon (head), two long spines behind its compound eyes, as well as rows of sharp spines along the center and both sides of its body. Even the tiniest detail is preserved, such as the individual calcite lenses of the compound eyes and the small bumps (called postules) scattered on the head and body. This is a rarely offered trilobite in great demand for its beauty. *Specimen measuring 2 1/4 x 1 3/4 in, Matrix measuring 6 x 4 in*

**\$1,400 - 2,000**



1033

1033

**LARGE RUSSIAN TRILOBITE WITH AMMONITE**

*Asaphus platyurus*  
*Orthoceras sp.*

Devonian

*Wolchow River Region, St. Petersburg, Russia*

This specimen has been professionally prepared with the genal spines dramatically curving upward free of the matrix. Revealed also is a partial seven-inch orthoceras on the white limestone matrix. *Trilobite specimen measuring 3 1/2 x 3 in, Matrix measuring 8 x 7 in*

**\$800 - 1,000**

**To be sold without reserve**



1034

1034

**TRILOBITE ERBENOCHILE HOLLARD**

*Erbenchile hollard*

Devonian

Morocco

Possessing some of the largest eyes in the trilobite world, this impressive Devonian specimen also features a row of prominent dorsal spines. Current academic thought speculates that these may have served as a defensive foil - or possibly as a sensory organ allowing the creature to interpret its marine world. *Measuring 3 x 3 x 3 in*

**\$2,500 - 3,500**

1035

**MOROCCAN KOLIHAPELTIS TRILOBITE**

*Kolihapeltis hollard*

Devonian

Morocco

With its flowing spines, *Kolihapeltis* ranks among the most elegant and graceful of all trilobite species. Preparation can take up to thirty hours of meticulous work to free the delicate spines from the hard limestone matrix which has encased them for 400 million years. Measuring 3 1/2 x 3 in

\$2,000 - 3,000



1035

1036

**MOROCCAN DEVONIAN TRILOBITE**

*Eccoptochile* sp.

Devonian

Morocco

This is a highly unusual and collectible example of a rare and, so far, undescribed species of cheirurid. The pedestal-like preparation allows for a full view of both the specimen's dorsal and ventral sides, and even exposes its *hypostome*, or mouth plate. Measuring 4 x 3 x 3 1/2 in

\$1,500 - 2,000



1036

1037

**PARALEJURUS REHAMNANUS TRILOBITE**

*Paralejurus rehamnans*

Devonian

Morocco

It has been speculated by science that the smooth contours of this trilobite species' calcite carapace allowed it to easily burrow into the soft sediments of the Devonian sea floor. The trilobite may have adapted such a lifestyle in order to avoid an ever-more aggressive group of predators which were emerging in the primal seas at this time. Measuring 3 1/2 x 2 1/2 x 3 1/2 in

\$2,000 - 3,000



1037



1038<sup>w</sup>

**MASSIVE TRILOBITE PLAQUE**

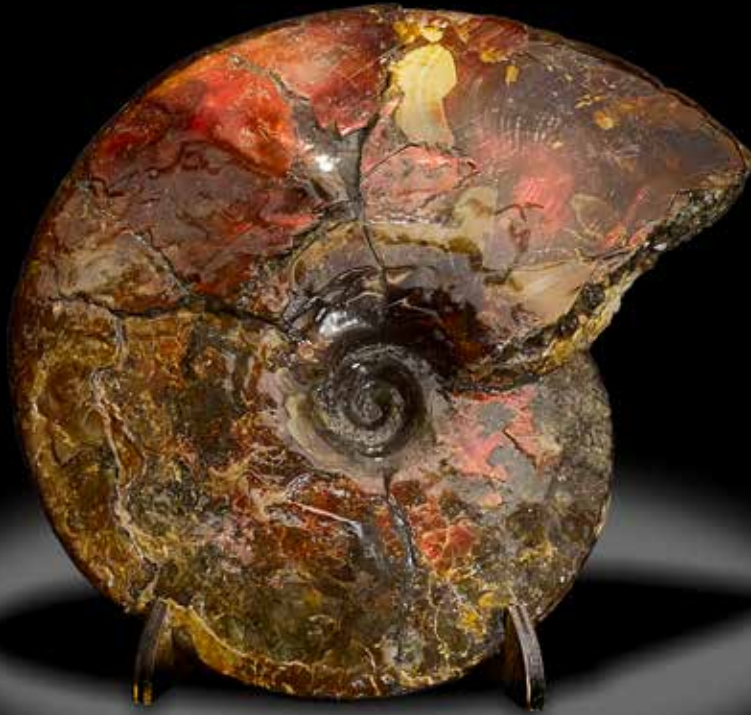
*Acadoparadoxides*

*Cambrian*

*Tikniouine, Anti-Atlas, Morocco*

Over the last decade, Morocco has become famous for its amazing array of trilobites. This rare, massive plate, featuring over fifteen large, complete and partial, *Acadoparadoxides* trilobites, represents one of the finest totally natural assemblages ever to emerge from North Africa. The mere size and orientation distinguish this natural plaque. This is a piece that will appeal equally to the advanced collector and to those who have a keen eye for especially attractive fossil pieces. A cataclysmic event was responsible for the sudden death and burial of this mass of creatures. Every specimen is natural and unrestored. *Matrix measures 86 x 45 x 2 in, Largest Trilobite measures 13 1/2 in*

**\$10,000 - 12,000**



1039

## CEPHALOPODS

1039

### IRIDESCENT AMMONITE

*Placenticerus meeki*

Upper Cretaceous

Bear Paw, St. Mary's River, Alberta, Canada

Having large areas of iridescent red nacre present, this is an attractive ammonite suitable for cabinet display. Measuring 9 x 7 x 2 1/2 in

\$900 - 1,200

1040

### IRIDESCENT AMMONITE

*Indeterminate species*

Volga River, Ulyanovsk City Region, Russia

Complete on both sides, showing excellent ribbing and iridescence as well as evidence of pyritization. Measuring 11 x 4 in

\$800 - 1,200



1040



1041

1041

**RARE JURASSIC AMMONITES**

*Porpoceras verticosum*

Lower Jurassic

France

Three individual ammonites in original matrix. Ranging in size from 2 to 2 ½ inches in diameter. Measuring 10 x 6 x 4 in

**\$1,000 - 1,400**



1042

1042

**UNCOILED IRIDESCENT AMMONITE**

*Indeterminate species*

Russia

An uncoiled ammonite displaying ribbing, intact nacre and pastel pink iridescence, as well as some suture patterns, with grey matrix attached to the reverse side. Measuring 8 x 6 x 3 in

**\$400 - 600**

To be sold without reserve



1043

1043

**AMMONITE AND NAUTILOID IN MATRIX**

*Parkinsonia complanata, Cenoceras*

*similimum*

Jurassic

Fresney, France

An ammonite and a nautiloid, preserved in original matrix. Measuring 10 x 10 x 4 ½ in

**\$700 - 900**





1044

**PAIR OF ENGLISH AMMONITES**

*Caloceras johnstoni*

Lower Jurassic

Lower Lias, Somerset, United Kingdom

Spectacularly large for their locality, a pair of exquisitely preserved Jurassic ammonites exhibit deep textural relief, producing a visually captivating presentation. An aesthetically pleasing composition on an irregularly shaped natural matrix. *Diameter of specimens measuring 24 and 18 in respectively; matrix measuring 44 x 29 in*

**\$12,000 - 14,000**



1045



1046



1047

1045

**DECORATIVE FRENCH AMMONITE**

*Arietitites bucklandi*  
Early Jurassic  
France

A rich black coloration, with a strong ribbed texture, distinguishes this aesthetic ammonite on original matrix. *Measuring 11 1/2 x 11 x 3 in*

**\$800 - 1,000**

To be sold without reserve

1046

**AMMONITE IN MATRIX**

*Harpoceras falcifer*  
Jurassic  
Holzmaden, Germany

A fine, large ammonite preserved in natural matrix. The ammonite measures 10 1/4 inches in diameter. *Measuring 25 x 17 x 1 in*

**\$500 - 700**

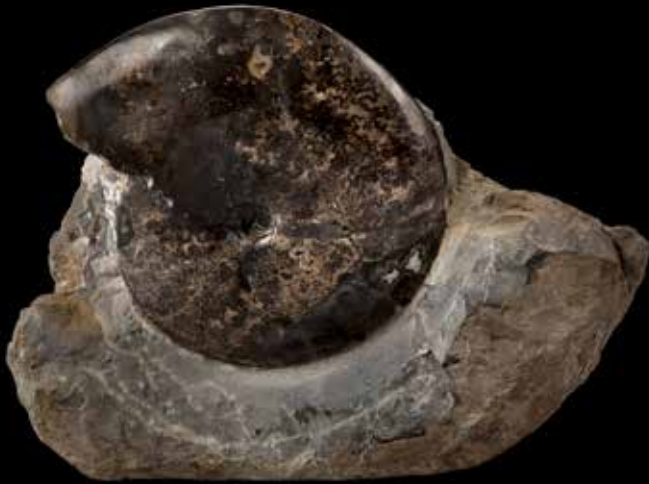
1047

**THREE AMMONITES ON MATRIX**

*Harpoceras, Dactyloceras*  
Holzmaden, Germany

A group of three ammonites preserved in the original matrix. *Measuring 27 x 16 x 1 1/2 in*

**\$700 - 900**



1048



1049



1050

1048

**AMMONITE ON MATRIX**

*Sphenodiscus sp.*  
Cretaceous  
South Dakota

Offered is a large polished Cretaceous ammonite in original matrix. The matrix has been shaped to provide a natural base for the ammonite encased in the rock. *Diameter of ammonite measures 14 in. Matrix measures 20 x 17 in*

**\$1,500 - 2,000**

1049

**LARGE AMMONITE BLOCK**

*Hammatoceras*  
Cretaceous  
France

A genus of Late Toarcian Stage ammonites, *Hammatoceras* lived between 184 and 175 million years ago. Offered is a large block of nicely ribbed individuals. *Measuring 19 x 12 1/2 x 5in*

**\$1,000 - 1,200**

1050

**ORTHO CERAS PLAQUE**

*Geisonoceras sp.*  
Middle Devonian  
Sahara Desert, Morocco

Composed of black fossil-bearing marble, this is an attractive *Geisonoceras sp.* plaque. A mass mortality plate, a cataclysmic event caused the sudden death of a large number of individuals. *Geisonoceras* was a gregarious colonial creature. Each specimen is polished to reveal the fine detail of the chambers. *Measuring 21 x 13 x 2 in*

**\$400 - 600**

**To be sold without reserve**



1051



1052

1051  
**LARGE GROUP OF BELEMNITES**

*Passaloteuthis*  
Jurassic  
Germany

A large group of twenty-one belemnites in original matrix. The individuals measure from 1 to 4 ½ inches in length. *Measuring 12 x 9 x 1 ¼ in*

**\$500 - 700**

1052  
**LARGE BELEMNITE PLATE**

*Youngibelus sp.*  
Early Jurassic  
Germany

A group of belemnites measuring from 4 ½ to 7 ¾ inches, preserved in original matrix. Belemnites are extinct cephalopod mollusks which lived during the Jurassic and Cretaceous Periods. *Measuring 25 x 19 x 1 ¼ in*

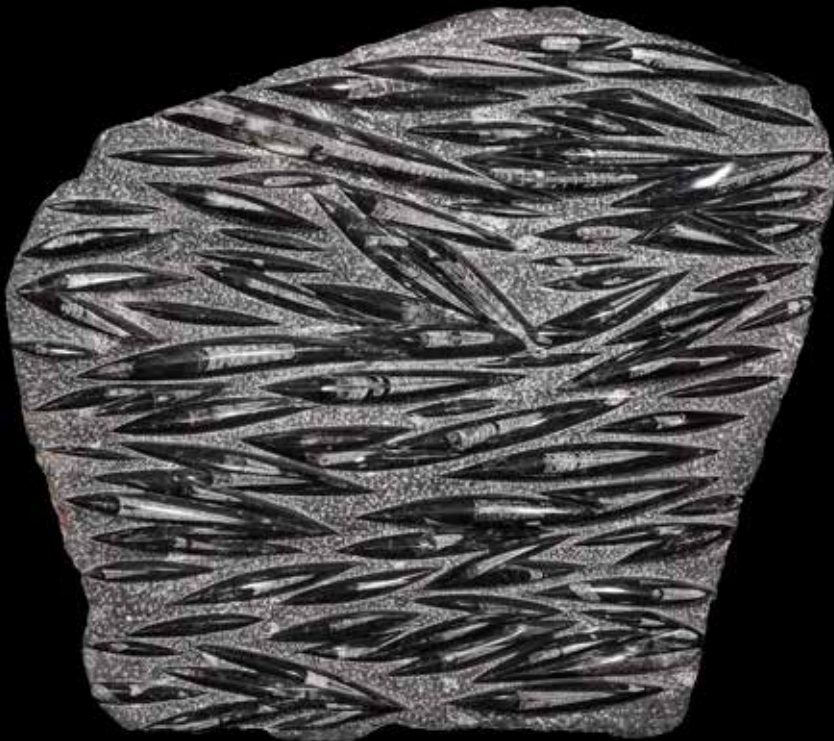
**\$600 - 900**

1053  
**LARGE ORTHOCERAS PLAQUE**

*Geisonoceras sp.*  
Middle Devonian  
Sahara Desert, Morocco

Composed of black fossil-bearing marble, this is an attractive *Geisonoceras sp.* plaque. The present plaque bears testimony to a geological cataclysm which caused the sudden death of a large number of individuals—known as a *mass mortality* event. It also provides evidence that *Geisonoceras* was a gregarious colonial creature. Each specimen is polished to reveal the fine detail of the chambers. *Measuring 37 x 33 x 3 1/2 in*

**\$1,200 - 1,500**  
To be sold without reserve



1053

1054<sup>w</sup>

**LARGE FREESTANDING ORTHOCERAS  
TOWER**

*Geisonoceras sp.*

*Middle Devonian*

*Sahara Desert, Morocco*

Numerous nicely preserved orthoceras specimens provide a natural sculptural presentation in black and white. Orthoceras is an extinct cephalopod, somewhat similar in morphology to today's squid. *Measuring 62 x 10 x 4in*

**\$1,250 - 1,500**

**To be sold without reserve**





1055



1055

**EXCEPTIONAL JURASSIC SQUID – PART AND COUNTERPART**

*Plesioteuthis prisca*

Late Jurassic

Solnhofen, Germany

Even the ink sack is visible in this exceptionally well-preserved specimen. Fortuitously discovered on a cleavage plane in sedimentary stone, two squid specimens in one were uncovered. Known from the famous *lithographic limestone* of Solnhofen, Germany, this genus is from an extinct group of squids first described in 1859. *Measuring 12 x 11 x ¾ in (2)*

**\$1,800 - 2,200**



1056

1056

**CRINOID GROUP**

*Encrinurus liliiformis*

Middle Triassic

Germany

An attractive group of four crinoids in original matrix. The largest crinoid measures 9 ½ inches in length. *Measuring 11 x 10 x 3 ¼ in*

**\$1,000 - 1,250**



1057

1057

**CRETACEOUS SCAPHITE CLUSTER**

*Hoploscaphites, Jeletzkytes sp.*

Cretaceous

Fox Hills Formation, South Dakota

Opalescent scaphites from this geologic formation display subtle hues of cream, pink and green, beautifully contrasted with gray-black stone matrix. The largest scaphite in the present cluster measures three inches across. Four scaphites are offered in their original matrix. *Measuring 4 x 4 x 2 in*

**\$800 - 1,200**



1058

**JURASSIC CRINOID FROM GERMANY**

*Seirocrinus subangularis*

Jurassic, Toarcian

Holzmaden, Germany

Gorgeous preservation distinguishes this Jurassic crinoid.

Contrasting nicely with the richly toned shale characteristic of this famous locality, its subtle shimmer is produced by pyrite mineral replacement. Expert laboratory preparation is required to reveal these unique animals, as the densities of the matrix and fossils are quite similar. Measuring 20 x 19 1/2 x 1 in

\$8,000 - 10,000



1059

1059

**CRINOIDS WITH A CUTTLEFISH**

*Seirocrinus subangularis, Lolligosepia aalensis*  
*Early Jurassic, Toarcian*  
*Holzmaden, Germany*

Gorgeous preservation distinguishes this pair of Jurassic crinoids in associate with a rare cuttlefish, the natural composition of which evokes a work of contemporary art. Contrasting nicely with the deep richly toned shale characteristic of this famous locality, their subtle shimmer is produced by pyrite mineral replacement. Expert laboratory preparation is required to reveal these unique animals, as the densities of the matrix and fossils are quite similar. *Measuring 21 1/2 x 4 1/4 x 2 1/2 in*

**\$8,000 - 10,000**

**FISH**

1060

**PAIR OF AGATISED FOSSIL CORAL SPECIMENS**

*Indeterminate species*  
*Oligocene - Miocene*  
*Florida*

This fine matched pair of fossilized coral specimens exhibits a beautiful chalcedony replacement boasting dramatic deep amber colors. Under unique and fortuitous geological conditions, silica-rich water percolated through limestone causing the corals to be replaced by agate. *Each measuring 9 3/4 x 5 1/2 in (2)*

**\$500 - 700**

**To be sold without reserve**



1060





1061

**MULTIPLE FOSSIL FISH PLATE**

*Mioplosus labracoides*, *Diplomystus dentatus*, *Cockerellites liops*  
Eocene

Green River Formation, Wyoming

Three genera are represented by *Mioplosus labracoides*, *Diplomystus dentatus* and *Cockerellites liops* individuals in this expertly prepared and highly decorative mural. Framed and cleated for ease of wall display. Measuring 43 1/4 x 24 1/2 in

**\$1,000 - 1,500**



1062



1063



1064

1062

**MASSIVE MEGALODON TOOTH**

*Carcharocles megalodon*  
Miocene  
Indonesia

From the largest shark species, indeed, the largest fish species, to ever inhabit the planet, this stupendous *Carcharocles megalodon* tooth is larger than most discovered from this prehistoric behemoth. Adding to its appeal is an attractive mahogany coloration. *Carcharocles megalodon*, which thrived in the warm, shallow seas of the Miocene and Pliocene Epochs, may have gone extinct due to the onset of the Ice Age, when the seas shrunk, the polar ice caps grew and ocean temperatures declined. *Measuring 6 x 4 1/4 in*

**\$4,000 - 5,000**

1063

**MEGALODON TOOTH**

*Carcharocles megalodon*  
Miocene  
South Carolina

A well preserved *Carcharocles megalodon* tooth displaying attractive black coloration. Mature *megalodons* were the apex predators of their time, though juvenile individuals would have been preyed upon by large marine creatures. *Carcharocles megalodon* means *giant tooth* - a moniker that is more than apt, as the enormous species' teeth are almost three times the size of the contemporary great white shark's. *Measuring 5 x 4 in*

**\$1,500 - 2,000**

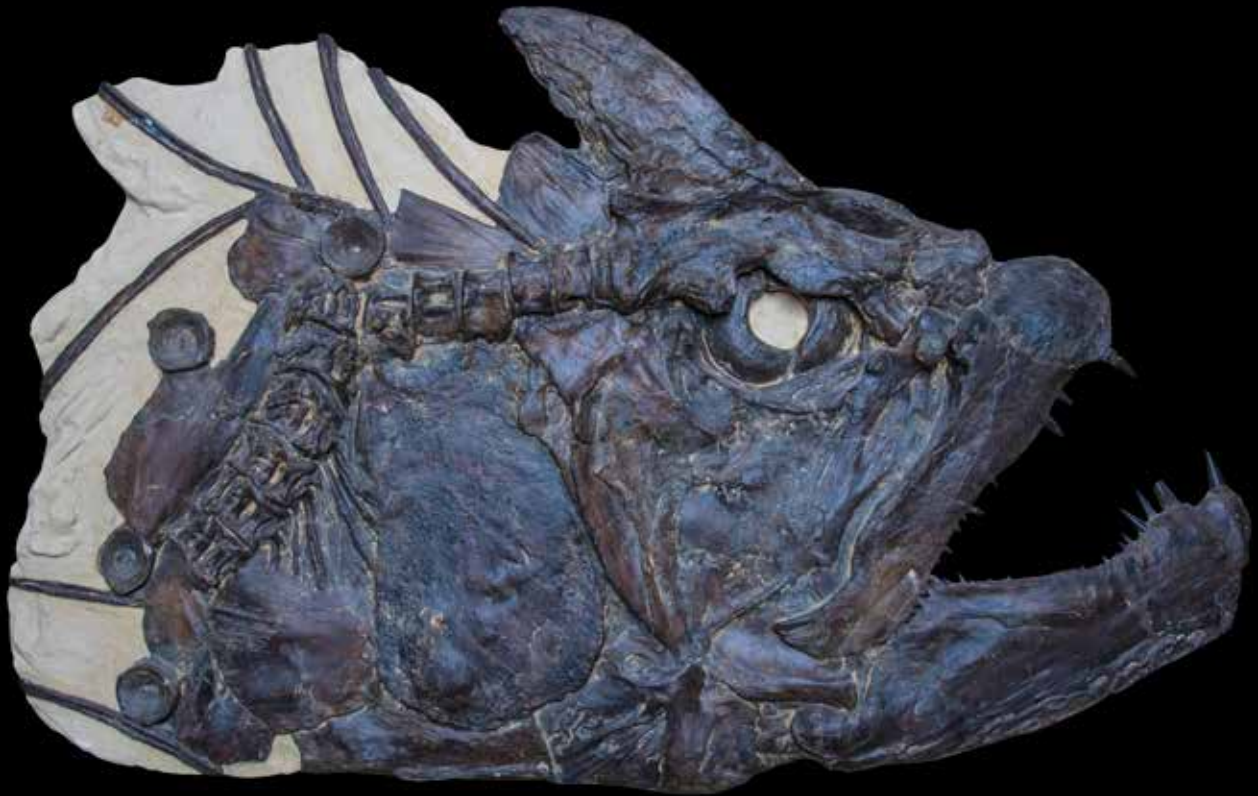
1064

**GROUP OF FIVE MOROCCAN FOSSIL TEETH**

*Carcharocles auriculatus, Palaeocarcharodon orientalis, Archaeocete*  
Eocene, Morocco

Offered is a group of four shark teeth and one whale tooth from the Eocene of Morocco. All specimens are in excellent condition. *Largest tooth measuring 3 1/4 x 3 1/4 x 1 1/2 in (5)*

**\$1,000 - 1,500**  
**To be sold without reserve**



1065

**GIANT FISH SKULL FROM KANSAS**

*Xiphactinus audax*

Cretaceous

Niobrara Formation, Kansas

When dinosaurs roamed the landmasses, the monstrous *Xiphactinus* menaced the intracontinental seaway which separated the western third of North American from the rest of the continent. *Xiphactinus* was the largest bony fish to have ever inhabited the planet. The present magnificent *Xiphactinus* skull specimen boasts gorgeous preservation, including nicely preserved, formidable teeth and several vertebrae. It has been mounted in a faux matrix, a customary display method for fossils from this locality due to the highly friable nature of the matrix in which these treasures are found. Overall measuring 33 1/2 x 22 1/2 in. Skull measures 25 x 17 in

**\$15,000 - 18,000**



1066



1067



1068



1069

1066

**CARCHAROCLES MEGALODON SHARK TOOTH**

*Carcharocles megalodon*

*Miocene*

*South Carolina*

Even though *megalodon* was the largest shark that ever lived, growing to more than 50 feet in length, most of the teeth found are only 3-4 inches in length. Teeth over 5 inches in length are in great demand. The present beautiful tooth was found in the muddy river waters of South Carolina. Estimating the length of a shark at about 10 feet in length to every inch of tooth, this behemoth would be close to 55 feet long. This large tooth has a complete black root and nicely contrasting greenish gray enamel. Very good serrations and excellent enamel, with no repair, are seen. *Measuring 5 x 3 3/4 x 1 1/2 in*

**\$1,000 - 1,500**

1067

**BLUE MEGALODON TOOTH**

*Carcharocles megalodon*

*Miocene*

*Indonesia*

From the largest shark species, indeed, the largest fish species to ever inhabit the planet, this stupendous *Carcharocles megalodon* tooth is larger than most discovered from this prehistoric behemoth. Adding to its appeal is an attractive *blue* coloration. *Carcharocles megalodon*, which thrived in the warm, shallow seas of the Miocene and Pliocene Epochs, may have gone extinct due to the onset of the Ice Age, when the seas shrunk, the polar ice caps expanded, and ocean temperatures declined. *Measuring 5 3/8 x 4 in*

**\$1,300 - 1,800**

1068

**TAN ROSE COLOR MEGALODON TOOTH**

*Carcharocles megalodon*

*Miocene*

*Indonesia*

Beautifully preserved serrations and an intact root are seen in this *megalodon* tooth, which also displays an interesting tan-rose coloration. *Carcharocles megalodon* is the largest shark, as well as the largest fish, that ever lived. *Measuring 3 1/2 x 3 in*

**\$600 - 800**

**To be sold without reserve**

1069

**GREY MEGALODON TOOTH**

*Carcharocles megalodon*

*Miocene*

*South Carolina*

Beautifully preserved serrations and an intact root are seen in this *megalodon* tooth, which also boasts a rich grey coloration. *Carcharocles megalodon* is the largest fish, as well as the largest shark, that ever lived. *Measuring 4 3/4 x 3 1/2 in*

**\$800 - 1,000**



1070

**SUPERLATIVE LARGE GUITARFISH**

*Rhombopterygia cappetta*

Late Cretaceous

Hgula, Byblos, Lebanon

This astonishing Lebanese fish specimen displays numerous distinguishing features. Soft tissue preservation, a part/counterpart presentation, exceptionally large size, rarity and excellent preservation set it in its own class, in both decorative and scientific terms. Fortuitously, the specimen was preserved along a cleavage plane of rock; when it was excavated, it split into two halves. Both halves exhibit soft tissue preservation in addition to amazing bone detail. Discovered in Hgula, this species has no living relative. The 100-million-year-old guitarfish genus represents the rhombic-shaped disk family. The present example represents a remarkable rarity among Middle Eastern fishes. From a private European collection. Each measuring 31 x 22 in (2)

**\$12,000 - 15,000**



1071

## REPTILES

1071

### LARGE PERMIAN REPTILE

*Claudiosaurus germaini*

Late Permian

Madagascar

During the Permian Period, the supercontinent of Pangaea was still emerging. This Period, which lasted from 299 million years ago to 251 million years ago, ended in the largest mass extinction the planet has ever known. Here is a rare opportunity to acquire an extinct fossil reptile from that time. *Claudiosaurus* is not a dinosaur, but rather a reptile of the extinct diapsid group (which includes lizards, snakes, crocodiles, dinosaurs and pterosaurs) characterized by the presence of two temporal openings in the skull. In life, its size would have approximated the size of a modern marine iguana. *Claudiosaurus* possessed a long tail, large-webbed feet and a small head. *Length of specimen measuring 29 in; Matrix measuring 16 1/2 x 14 x 2 1/2 in*

\$10,000 - 12,500

1072

### FOSSIL DRAGONFLY

*Tarsophlebia*

Jurassic, Tithonian

Solnhofen, Germany

The delicate features of insects such as dragonflies are seldom seen in the fossil record. Dragonflies are one of the most delightful types of fossils found in the famed sediments of Solnhofen. *Measuring 9 1/2 x 8 1/4 x 1/4 in*

\$1,000 - 1,250



1072

## MAMMALS

1073

### GIANT GROUND SLOTH SKULL

*Megalonyx jeffersonii*  
Late Pleistocene  
Florida

*Megalonyx jeffersonii* is the iconic fossil giant ground sloth named after Thomas Jefferson, who first presented on fossils of this species. One of the spectacular now-extinct mega-fauna of the North American Pleistocene, *Megalonyx jeffersonii* lived between 2.4 million - 11,000 years ago. Named for the third president of the United States, the discovery of this species - and Jefferson's subsequent lecture at the American Philosophical Society in 1797 - marked the beginning of the study of vertebrate paleontology in North America. The present magnificent skull specimen displays fine preservation. Measuring 10 1/2 x 13 x 8 in; Length of presentation measuring 13 1/2 in

\$20,000 - 25,000

1074

### GIANT BEAVER SKULL

*Castoroides ohioensis*  
Pleistocene  
Florida

One of the main anatomical differences between the Giant Beaver and modern beaver species, besides its massive size, is tooth structure. Modern beavers have chisel-like incisor teeth for gnawing on wood. The teeth of the Giant Beaver were bigger and broader, growing to about six 3 inches in length. Also, proportionate to its size, the tail of the Giant Beaver was longer and narrower, and its hind legs shorter. The first Giant Beaver fossils were discovered in 1837 in a peat bog in Ohio, hence the species name *ohioensis*. The present specimen displays excellent preservation and expert preparation. The upper incisors are original. Specimens of this size and quality are very rare. Offered on a custom base. Measuring 14 x 11 x 9 in

\$25,000 - 30,000

1075

### RARE EOCENE FOSSIL BAT

*Indeterminate species*  
Eocene  
Green River Formation, Wyoming

An extremely rare and intriguing fossil bat from the Green River Formation of Wyoming. The skeleton and skull are preserved as a negative impression on the limestone matrix. Length of specimen measuring 5 in; Matrix measuring 5 x 7 in

\$2,500 - 3,500



1073



1074



1075



(detail)



(detail)



(detail)

1076<sup>W</sup>

**CAVE BEAR SKELETON**

*Ursus spelaeus*

Pleistocene

Russia

Displaying a dominant stance, a large cave bear skeleton has been mounted in a lifelike presentation on hind legs, reaching upward with jaws open, exhibiting the formidable teeth of a predator. Cave bears inhabited Europe, Eastern Europe and parts of Asia until their extinction at the end of the last ice age. As shown by the archaeological record, they were contemporaries of modern humans: many cave sites show signs of competition between cave bears and humans as the two species battled for shelter for thousands of years. Evidence shows that both Neanderthals and Cro-Magnons hunted cave bears; scientists theorize that the demise of the cave bear may have been, in part, due to human hunting. The present cave bear specimen is mounted on a custom steel armature attached to a substantial steel base. *Overall height 102 in*

**\$25,000 - 30,000**







1077<sup>W</sup>

## PALEOBOTANY

1077<sup>W</sup>

### LARGE FOSSIL SEED FERN

*Alethopteris*

Late Carboniferous

Llewellyn Formation, St. Clair, Pennsylvania

This is an extremely large plate of fossil seed ferns from deposits near St. Clair, Pennsylvania. A specimen of this size and quality is rarely seen outside of a museum exhibit. Fossil seed ferns of many different types are represented on this extraordinary plate. They are preserved as a thin film of white *pyrophyllite* on black shale. The presentation is one complete, unbroken slab which can be wall mounted. *Measuring 76 x 48 in*

\$10,000 - 14,000

1078

### FOSSIL LEGUME

*Unidentified Legume*

Oligocene

Catahoula Formation, Jasper County, Texas

Exceptional preservation on a very unusual petrified wood end cut specimen. *Measuring 9 x 9 x 5 in*

\$800 - 900

1079

### OPALIZED WOOD

*Angiosperm*

Oligocene

Far East Primorsky Krai, Russia

A fine double heart. Round with exceptional ring preservation. From a location seldom seen near the North Korean/China border. *Measuring 11 1/4 x 4 1/2 x 1 1/4 in*

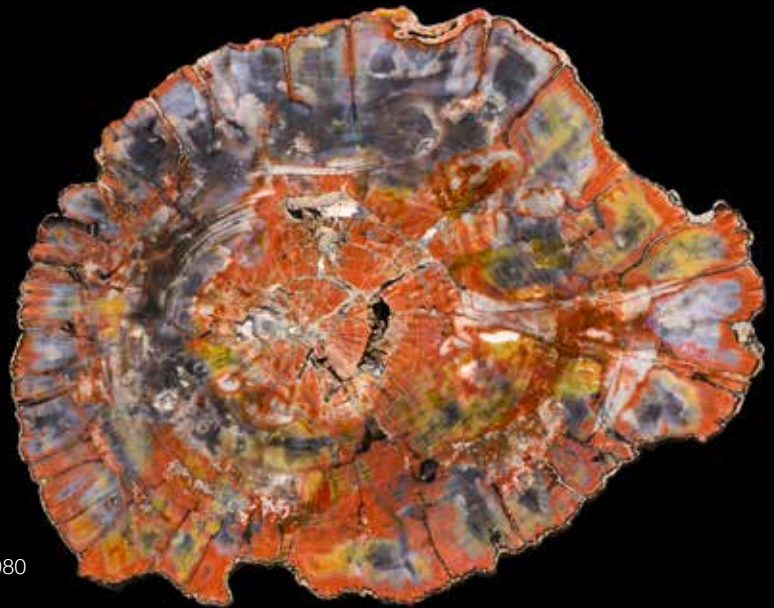
\$1,250 - 1,500



1078



1079



1080



1081

1080

**ARIZONA PETRIFIED WOOD SLAB**

*Araucarioxylon*  
Triassic  
Chinle Formation  
Arizona

Brilliant red, rust and magenta, with splashes of ochre, distinguish this petrified wood slice. Growth rings are visible in the central portion.

Measuring 21 1/2 x 17 1/4 x 1 in

\$2,000 - 2,800

1081

**PETRIFIED WOOD BARITE AND CALCITE**

*Schilderia adamica*  
Triassic  
Chinle Formation, Arizona

Out of all Arizona petrified wood found, less than 1% is *Schilderia*. This type of wood is found only in the upper Chinle Formation. This specimen is from one of only three *red Schilderia* logs found in the 1970's at the site in Northeastern Arizona. Measuring 19 3/4 x 15 x 1 1/4 in

\$1,500 - 1,800



(detail)

1082<sup>W</sup>

**PALM FROND WITH BIRD - AN INCOMPARABLE PRESENTATION**

*Sabalites* sp., bird species unknown

Eocene

Green River Formation, Lincoln County, Wyoming

In the paleontological record of the Green River Formation there has never before been seen a fossil bird preserved with a fossil palm frond. In this astonishing natural presentation, both fossils are in seen in their original positions. The bird, which had partially peeled from the palm side of the matrix, was restored to its original position. The skull of the bird, found on the negative side of the palm half, has been preserved for scientific inquiry; a cast bird skull has been inlaid in its place. Amazingly, most of the feathers of the bird are highly visible and display strong contrast to the matrix. This piece represents a remarkable discovery. Framed in tropical walnut and fitted with a metal cleat system for ease of wall display on any wall of conventional construction. Matrix measuring 61 x 55 in; Palm frond measuring 63 x 50 in; Bird measuring 10 x 10 1/2 in

**\$45,000 - 50,000**





## CASTS

1083<sup>W</sup>

### **MASSIVE AMERICAN MOSASAUR SKULL - RESEARCH QUALITY CAST**

*Mosasaurus tylosaurus prorigor*

*Cretaceous*

*Niobrara Chalk Formation, Western Kansas*

A formidable skull from one of the largest North American mosasaur specimens ever collected has been professionally molded to produce a fine research quality cast. The massive specimen was fortuitously preserved in a dorsal/lateral compression, allowing viewing of the numerous large teeth of both the upper and lower jaws. Four cervical vertebrae were also discovered with the magnificent specimen.

*Measuring 64 x 29 x 3 in*

**\$1,500 - 2,000**

# Amber, Copal, Zoology, Curiosities and Mineral Decor

Lots 1084 - 1127





1084



1085



1086



1087

1084

**LEAF, FLOWER AND BERRY IN AMBER**

*Miocene*  
*Chiapas, Mexico*

Chiapas amber was originally discovered by the Maya who highly valued it and included it in their inventory scrolls. This specimen exhibits a leaf in association with a flower and berry. A remarkable collection addition for the discriminating collector. *Measuring 3 x 2 1/2 x 3/4 in*

**\$2,500 - 3,200**

1085

**MILLIPEDE IN AMBER**

*Miocene*  
*Chiapas, Mexico*

Amber specimens with inclusions form a fascinating area of fossil collecting. This specimen exhibits very rare millipede. Superlative preservation of the legs is seen on the insect. *Measuring 2 3/4 x 1 3/4 x 1 3/4 in*

**\$2,000 - 2,500**

1086

**SPIDER IN AMBER**

*Miocene*  
*Chiapas, Mexico*

The amber deposits of Chiapas were re-discovered in 1953 by the archaeologist Frans Blom and were subsequently studied at the University of Berkeley in California. This offering is a superb spider in clear Miocene amber. *Measuring 2 x 1 x 1/2 in*

**\$800 - 1,200**

**To be sold without reserve**

1087

**LARGE CENTIPEDE IN AMBER**

*Miocene*  
*Chiapas, Mexico*

Amber specimens with inclusions form a fascinating area of fossil collecting. A remarkable display piece with a large centipede in clear amber. *Measuring 2 5/8 x 2 x 1/2 in*

**\$2,000 - 2,800**





1088



1089

1088

**GIANT ANT IN AMBER**

*Miocene*

*Chiapas, Mexico*

The amber deposits of Chiapas were re-discovered in 1953 by the archaeologist Frans Blom and were subsequently studied at the University of Berkeley in California. This offering is a very large ant in clear Miocene amber. *Measuring 1 1/2 x 1 1/2 x 1/2 in*

**\$1,500 - 2,000**

1089

**AMBER SPECIMEN WITH RARE FOOT INCLUSION**

*Indeterminate species*

*Cretaceous*

*Myanmar (Burma)*

Amber is approximately 99 million years old. It predates any birds as we know them today. *Measuring 2 1/2 x 1 1/2 x 1/4 in*

**\$2,000 - 3,000**

1090

**AMBER SPECIMEN WITH LEAF AND SPIDER**

*Indeterminate species*

*Oligocene – Miocene*

*Dominican Republic*

A large specimen with good to moderate transparency displaying a host of insect inclusions. Contour polished on all sides. *Weighing approximately 459.2 grams and measuring 8 x 4 x 1 1/2 in*

**\$500 - 700**

**To be sold without reserve**



1090

# Amber Specimens Deaccessioned from the Myanmar Amber Museum

Lots 1091 - 1101

The following Burmese amber lots were deaccessioned by the Myanmar Amber Museum in response to the recent military coup.

These amber treasures offer a tantalizing, three-dimensional view of prehistoric life 100 million years ago during the *age of dinosaurs*. The vivid animals, insects and plants are superbly preserved, with exquisite details just as they appeared so long ago - details which are often lost in the crush of fossils formed in rock.

Some of the richest deposits of amber have been found in Myanmar's Kachin State, in the northern part of the country, near the border of China. Government forces and ethnic minorities have fought in this region for years, culminating in the recent extremes of conflict in the region.

All amber in the present collection was obtained from families in the amber trade with all taxes properly paid. No remuneration was paid to the military at any time. The collection is an excellent opportunity for bidders to acquire Burmese amber with a straightforward provenance, a rare opportunity, particularly given present circumstances in Myanmar.



1091



1092

1091

**ANIMAL FOOT IN AMBER**

*Indeterminate species*

*Cretaceous*

*Myanmar*

Arguably the most rare and sought after of animal specimens in amber is the lizard. In the present offering, a 100-million-year-old honey-colored Burmite amber nugget displays an exceptionally rare vertebrate foot, thought to be the foot of a lizard. Soft tissues are visible with superb preservation. *Measuring 1 1/4 x 3/4 x 1/8 in*

**\$1,500 - 2,000**

1092

**FEATHER IN AMBER**

*Indeterminate species*

*Cretaceous*

*Hukawng Valley, Myanmar*

Most amber is too young to contain dinosaur feathers, but Burmite, the 100-million-year-old amber found in the Hukawng Valley in northern Burma (Myanmar), is not. In one of the scientific stories of the year several years ago, presumed dinosaur feathers were found in 80-million-year-old Canadian amber. More than 40,000 Canadian amber specimens were examined from a museum collection, which yielded about a dozen amber nuggets containing feathers. The distinction between dinosaurs and early birds is somewhat blurred. Both coelurosaur and tyrannosaur dinosaurs are known to have been feathered, evidenced by the outstanding fossils that have been found in Liaoning, China, dated from 110-130 million years old. Both the diversity and preservation of the possible dinosaur feathers preserved in Burmite exceed that of the Canadian amber. In the present specimen, a partial feather is seen in remarkable detail; the branching symmetric feathers are beautifully preserved with a central rachis. Being symmetrical, these are not flight feathers but rather feathers from the body or arm of a 100-million-year-old dinosaur or the body of a bird. *Measuring 1 1/2 x 3/4 x 1/4 in*

**\$1,500 - 2,000**



1093

1093

**SCORPIONS WITH SPIDER IN AMBER**

*Indeterminate species*

*Cretaceous*

*Myanmar*

An exceptionally rare specimen displaying two scorpions, a snail and a spider in a clear amber nugget. Many of the insects found in Burmite are extinct species which are similar, but slightly different than, modern insect species. *Measuring 2 x 1 3/8 x 3/4 in*

**\$2,000 - 2,500**



1094



1095



1096



1097

1094

**EXCEPTIONAL LARGE AMBER SPECIMEN WITH SPIDER, MILLIPEDE, BEETLES**

*Indeterminate species*  
*Cretaceous*  
*Myanmar*

An extremely large piece of amber with a large millipede, nearly one inch long, a rare dung beetle and an undescribed new rare beetle. This is considered to be a trophy piece. *Weighing 105 grams and measuring 3 1/2 x 2 1/2 x 1 1/4 in*

**\$2,500 - 3,500**

1095

**AMBER WITH PUPA SHELL**

*Indeterminate species*  
*Cretaceous*  
*Myanmar*

An amber specimen exhibiting an extremely rare pupa shell of an insect believed to be from the *Cryptocephalena* subfamily, the leaf beetles. *Measuring 1 x 3/4 x 3/8 in*

**\$1,500 - 2,000**

1096

**AMBER WITH MALE SCALE INSECT, LIZARD SKIN AND NUMEROUS INSECTS**

*Indeterminate species*  
*Cretaceous*  
*Myanmar*

Inclusions of a rare male scale insect, two ants, lizard skin and numerous unidentified insects distinguish this amazing Cretaceous amber specimen. *Weighing 24 grams and measuring 2 x 2 x 3/4 in*

**\$2,000 - 2,500**

1097

**SCORPION IN AMBER**

*Indeterminate species*  
*Cretaceous*  
*Myanmar*

Amazing detail, including the distinctive scorpion tail and a portion of the mesoma (body), is seen in this partial scorpion from the *age of dinosaurs*. *Measuring 1 1/4 x 3/4 x 1/4 in*

**\$1,250 - 1,500**



1098

1098

**LIZARD IN AMBER**

*Indeterminate species*

*Cretaceous*

*Myanmar*

A rarity among amber inclusions, prehistoric lizards did not generally become trapped in tree resin because of their relatively large size.

Here, a partial lizard exhibits both rear legs and a partial tail. Several insects are also seen. *Measuring 2 1/2 x 2 x 3/8 in*

**\$3,000 - 4,000**

1099

**GROUP OF AMBER SPECIMENS WITH BOTANICAL INCLUSIONS**

*Indeterminate species*

*Cretaceous*

*Myanmar*

Three beautiful flowers and a well preserved leaf are seen encased in these four amber specimens. The first flowers made their appearance approximately 130 million years ago during the Early Cretaceous.

*Largest measuring 1 1/4 x 1 x 3/8 in (4)*

**\$1,250 - 1,500**



1099



1100

1100

**GROUP OF FIVE AMBER SPECIMENS WITH INSECTS**

*Indeterminate species*

*Cretaceous*

*Myanmar*

Five crystal clear amber specimens contain beautifully preserved insects including, an insect from the suborder Enicocephalidae, also called gnat bugs, or unique-headed bugs (due to their strange, elongated head) Insects from the Modern Enicocephalidae comprise approximately three hundred species and are found worldwide. Also, a beautiful cicada; an exceptionally well preserved mating termite pair; an insect from the order Heteroptera displaying large bulging eyes and an unusual mouth; a covetable extinct species from the genus. All specimens are exceptionally well preserved. *Largest measuring 1 1/4 x 3/4 x 3/8 in (5)*

**\$1,800 - 2,400**

1101

**RARE ASSEMBLAGE OF SNAIL SPECIES IN AMBER**

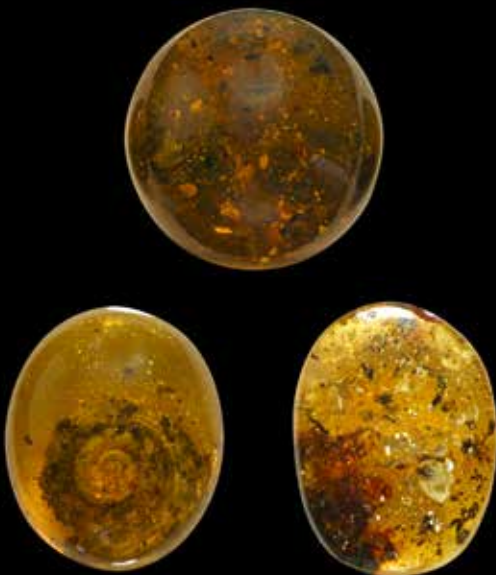
*Indeterminate species*

*Cretaceous*

*Myanmar*

An extremely rare assemblage of snails, representing a variety of indeterminate species, are captured within this superb amber specimen. *Largest measuring 3/4 x 1/2 x 3/8 in (3)*

**\$2,000 - 2,500**



1101



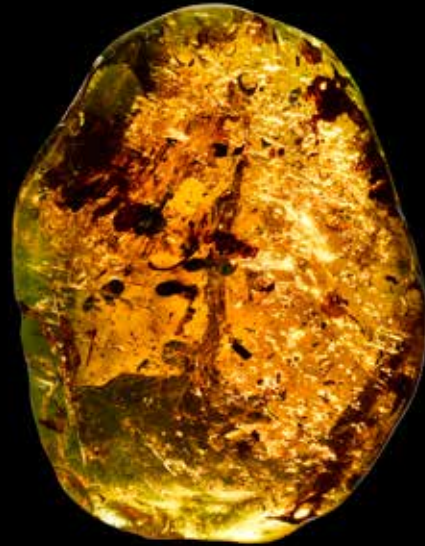
1102

1102  
**BURMITE SPECIMEN**

*Burma*  
 Dark and mostly opaque with minor translucency at the edges showing some red, this is a large specimen displays a fascinating convoluted surface. *Weighing approximately 776.0 grams. Height with stand 12 in*

**\$500 - 700**  
 To be sold without reserve

*Raised on a custom fitted wooden stand.*



1103

1103  
**MASSIVE AMBER SPECIMEN**

*Oligocene*  
*Chiapas, Mexico*  
 Numerous inclusions are visible in this very large amber specimen from Chiapas, Mexico. Under ultraviolet light the amber appears to be blue. Its size alone makes it noteworthy; the inclusions add fascination to this interesting piece. *Weighing 328 grams and measuring 5 3/8 x 4 x 1 7/8 in*

**\$2,500 - 3,500**

1104  
**AMBER WITH SPIDER**

*Chiapas, Mexico*  
 A large amber nugget of golden yellow hue and drop-shaped form, showing excellent polish which reveals the high degree of clarity. The spider inclusion is easily visible and stands out in high relief against the surrounding amber. Suitable for mounting as a pendant or to be retained as a fascinating cabinet piece. *Weighing approximately 43.65 carats and measuring 55.62 x 26.97 x 10.41mm*

**\$500 - 600**



1104



1105

1105

**GROUP OF AMBER NUGGETS WITH INSECTS**

*Oligocene*  
*Chiapas, Mexico*

A large group comprising seven larger amber nuggets, many with insect inclusions such as spiders and termites, weighing approximately 129.0 grams with the largest measuring 2 1/2 in; together with twelve smaller amber nuggets, some with natural reddish hues having some insects, weighing 28.8 grams. Largest measuring 2 1/2 x 1 3/4 x 5/8 in and smallest measuring 1/2 x 5/8 x 1/4 in (19)

**\$600 - 800**

To be sold without reserve

1106

**RARE DOUBLE BUTTERFLY IN AMBER**

*Oligocene*  
*Chiapas, Mexico*

The amber deposits of Chiapas were re-discovered in 1953 by the archaeologist *Frans Blom*, and were subsequently studied at the University of California, Berkeley. The present offering is one of the most rare pieces discovered in these amazing Oligocene aged amber mines. Not one, but two, butterflies are entombed in this extraordinary piece of Oligocene amber. This discovery is considered to be the only known double butterfly specimen in amber.

Chiapas amber was originally discovered by the Mayans. The beautiful 30-23-million-year-old fossilized tree sap, produced by the prehistoric hymenaea tree, fortuitously entombed small specimens of flora and fauna of the Oligocene. Here is an exceptionally rare example. Measuring approximately 73 x 35 x 19 mm

**\$25,000 - 30,000**



1106





1107

**AMBER SPECIMEN**

*Oligocene*

*Chiapas, Mexico*

Amber specimens form a fascinating area of fossil collecting. Under ultraviolet light the amber appears to be blue. A beautiful display piece. *Weighing 74.2 grams and measuring 3 3/4 x 2 5/8 x 3/4 in*

**\$1,800 - 2,200**



1108



1109

1108

#### **AMBER ALLIGATOR CARVING**

*Oligocene*  
*Chiapas, Mexico*

Offered is a superlative carving realistically depicting an alligator, carved from the fascinating 30-23-million-year-old Chiapas amber. The amber of Chiapas, Mexico, produced by the prehistoric hymanea tree, exhibits bluish hues when viewed under ultraviolet light, while appearing greenish under natural light. The animated carving was created by a master carver of San Cristobal de las Casas. *Weighing approximately 607 grams and measuring 7 x 6 1/2 x 2 1/2 in*

**\$3,000 - 3,500**

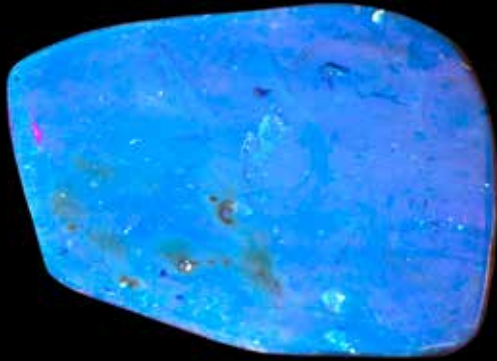
1109

#### **AMBER CARVING DEPICTING A SCORPION WITH BEETLE**

*Oligocene*  
*Chiapas, Mexico*

Offered is a superlative carving realistically depicting a scorpion in a confrontational pose with the beetle, carved from Chiapas amber. The amber of Chiapas, Mexico, produced by the prehistoric hymanea tree, exhibits bluish hues when viewed under ultraviolet light, while appearing greenish under natural light. The animated carving was created by a master carver of San Cristobal de las Casas. *Weighing approximately 157 grams and measuring 5 x 2 3/4 x 2 1/2 in*

**\$3,000 - 3,500**



1110



1110

**LARGE AMBER SPECIMEN WITH INSECT INCLUSIONS**

*Indeterminate species*

*Oligocene*

*Dominican Republic*

Having numerous unidentified insect inclusions visible in high relief. *Weighing approximately 52.0 grams and measuring 3 1/8 x 2 1/4 x 1/2 in*

**\$600 - 800**

**To be sold without reserve**



1111

1111

**AMBER CABOCHON WITH INSECT INCLUSIONS WITH A WING**

*Indeterminate species*

*Oligocene*

*Dominican Republic*

A large domed cabochon of amber display a pair of insects *in flagrante delicto* as well as a large pair of insect wings (without body). *Weighing approximately 17.7 grams and measuring 37.59 x 21.11mm*

**\$600 - 800**

**To be sold without reserve**

1112

**AMBER WITH TWO INSECT INCLUSIONS**

*Indeterminate species*

*Oligocene*

*Dominican Republic*

A jewelry-grade polished specimen of amber with excellent transparency, having two insect inclusions clearly visible. *Weighing approximately 2.26 grams and measuring 1 1/2 x 1/2 x 1/4 in*



**\$1,000 - 1,500**

1112



1113

1113

**AMBER NECKLACE**

*Eocene*

*Baltic Coast*

Formed over 45 million years ago, Baltic Amber is an organic substance--a fossil resin produced by coniferous trees which grew in Northern Europe - from southern regions of the present day Scandinavia to nearby regions of the Baltic Sea coast. The climate became warmer and trees started to exude large amounts of resin. The current necklace recalls man's interest in this fossilized tree resin and its use in human adornment since Paleolithic times. Suspending thirteen plaques of natural amber with unpolished surfaces, polished flat on the reverse side, suspended from a necklace of flat faceted amber beads, with spherical amber beads and darker rondelle-form spacers between. Completed by a traditional Bakelite screw clasp typical of most amber necklaces from this region. *Total weight approximately 52.1 grams. Length 16 in*

**\$500 - 700**



1114

1114

**"BUTTERSCOTCH" AMBER BEAD NECKLACE**

*Eocene*

*Baltic Coast*

There is a spectrum of dazzling colors in Baltic Amber of which many laymen are not aware. In fact, there are 250 different shades of natural Amber - from the most common cognac hues to bony whites. The current offering displays a golden yellow hue and an opacity which is termed "butterscotch", as its hue and texture is reminiscent of the candy. Designed as a single strand necklace comprised of near-spherical hand-polished beads graduating in size from 10.1 to 23.7mm, *completed by a bakelite screw clasp. Weighing approximately 108.5 grams. Length 14 1/2 in*

**\$300 - 500**

**To be sold without reserve**



1115



1116



1115

**LARGE TRANSPARENT COPAL SPECIMEN**

*Indeterminate species*

*Andes Mountains, Colombia, South America*

Colombian Copal is a hardened, part-fossilised tree resin that was exuded from the *hymenaea courbaril* tree, a relative of the extinct *hymenaea protera* and *mexicana* trees responsible for the creation of Dominican and Mexican amber. Deposits can be found throughout South America wherever the courbaril tree grows. Copal itself is often known as 'young amber'. When the resin has been exuded from the tree, it falls to the ground and eventually hardens and is buried under the forest floor and eventually, over millions of years is transformed into amber, a significantly harder resin. The present offering is a highly sculptural specimen, capable of standing on its own, contour polished on all sides to reveal the high degree of transparency and large number of insect inclusions. *Weighing approximately 919.2 grams and measuring 5 1/2 x 4 1/2 x 7 1/2 in*

**\$900 - 1,200**

**To be sold without reserve**

1116

**TWO COPAL SPECIMENS**

*Andes Mountains, Colombia, South America*

Both contour polished to reveal the high degree of transparency, *weighing approximately 198.8 grams and measuring 4 1/2 x 3 1/2 x 2 in*; together with a second, larger specimen of deeper golden hue, having numerous insect inclusions, *weighing approximately 326.9 grams and measuring 5 x 3 3/4 x 2 in. (2)*

**\$500 - 700**

**To be sold without reserve**



1117

1117

**COPAL SPECIMEN**

*Andes Mountains, Colombia, South America*

Copal, fossilized tree resin, is a more recently formed type of amber. The age of copal could be as little as 250 years old to as much as 16 million years ago, depending on the deposit. Offered is a specimen of Colombian copal displaying various winged insect inclusions. *Weighing approximately 507.0 grams and measuring 6 x 4 x 2 in*

**\$500 - 700**

**To be sold without reserve**



1118

1118

**COPAL SPECIMEN**

*Andes Mountains, Colombia, South America*

Copal, fossilized tree resin, is a more recently formed type of amber. Offered is a specimen of Colombian copal displaying some plant matter. The entire specimen is contour polished to reveal the high degree of clarity. The specimen is capable of standing on its own in several directions. *Weighing approximately 428.8 grams and measuring 6 x 4 x 3 1/2 in*

**\$400 - 600**

**To be sold without reserve**



1119



1120

1119  
**GEYSERITE**

*Eocene*  
*Texas*

A geysers specimen from an ancient hot springs deposit in Texas.  
*Measuring 10 x 8 x 4 in*

**\$400 - 600**

1120  
**GEYSERITE FROM TEXAS**

*Eocene*  
*Texas*

From an ancient hot springs deposit in Texas. *Measuring 9 x 9 x 5 in*

**\$400 - 600**

1121  
**TEXAS GEYSERITE**

*Eocene*  
*Texas*

Offered on a display stand, a large specimen of geysers from Texas.  
*Measuring 12 x 8 1/2 x 3 1/2 in*

**\$400 - 600**



1121



1122



1123

1122

**ALPINE IBEX SKULL**

*Capra ibex*

Modern

The Alpine ibex is a species of wild goat living in the European Alps. The horns of the present specimen measure 44 inches long, ranking them in the SCI Gold Medal Class. *Measuring 33 x 27 x 15 in*

**\$1,000 - 1,250**

1123

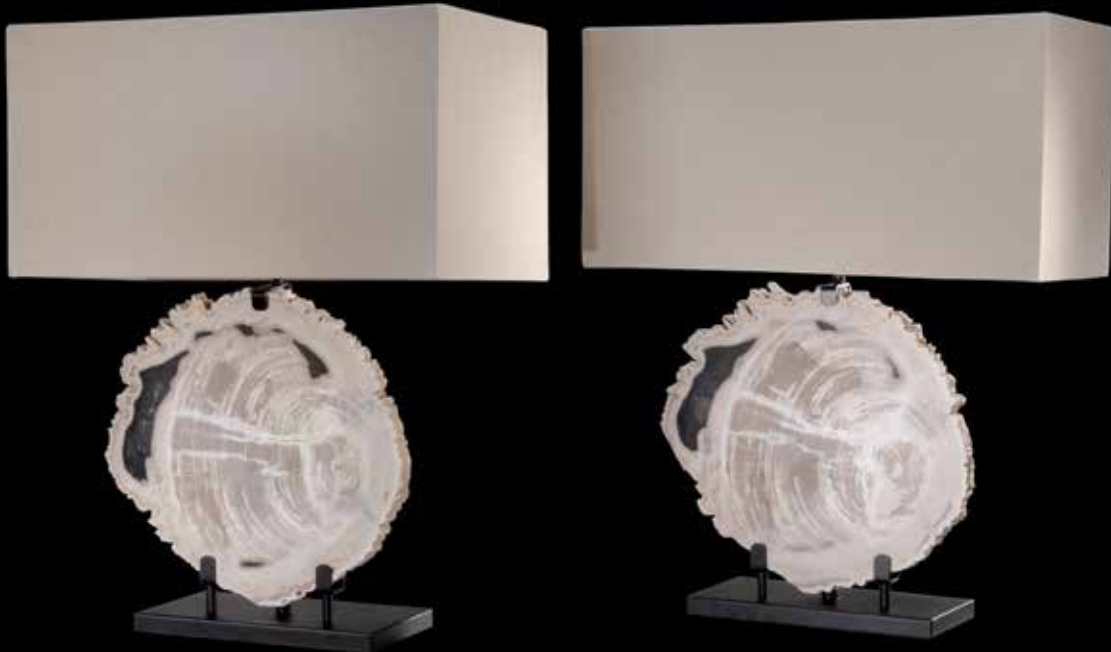
**DEER ANTLER TABLE LAMP**

Formed from naturally shed, white tail deer antlers, this lamp is as decorative as it is functional, with faux leather shade. *Height 30 in*

**\$150 - 250**

**To be sold without reserve**





1124

1124

**PAIR OF PETRIFIED WOOD TABLE LAMPS**

*Indeterminate species*

*Miocene*

*Java, Indonesia*

Preserved edges and growth rings are rarely seen in Indonesian petrified wood from the Miocene. Here, two contiguously cut specimens of petrified wood, featuring both aesthetically pleasing natural edges and well defined growth rings, are featured in an exquisite pair of table lamps. Offered on custom black metal bases. *Height: 27 in (2)*

**\$2,000 - 3,000**

1125

**ILLUMINATED POLISHED QUARTZ POINT ON GRANITE BASE BY HOVAVE RAPPAPORT**

Created by a well-known local California artist, Hovave Rappaport, this illuminated object features a large smoky quartz point originating from Brazil mounted on a custom-fitted beige granite base which is fitted with bulbs to create a light sculpture imbued with a warm glow. *Measuring 21 x 8 1/2 x 8 1/2in*

**\$1,500 - 2,000**

*Born in 1954 in Kibbutz Bet-Alpha, Israel, Hovave Rappaport graduated from Gilboa School with a major in Art. He moved to Los Angeles in 1980 and began to sculpt with natural stone materials such as marble, granite and onyx. Later, in 1986, he developed a new form of sculpture combining these stones and lighting. His work reveals the inner beauty of the natural stone in a very original way. The basis of much of his work is done by fabricating and polishing slabs from the stones and forming various geometric shapes such as obelisks, cubes and hexagons with the materials. Hovave believes his artwork lends beauty, visual pleasure and a soothing atmosphere to their surroundings. As a recognized artist in this field, his work is represented by some of the finest galleries in the United States and Japan.*



1125



1126

**PETRIFIED WOOD OBLONG BOWL**

*Indonesia*

A rustic, decorative polished petrified wood bowl showing excellent wood grain and attractive coloration. *Measuring 20 x 14 x 8in*

**\$800 - 1,200**

**To be sold without reserve**



1127

**LARGE AND IMPRESSIVE TIGER IRON MATRIX SPHERE**

*Western Australia*

Tiger's eye matrix is a fascinating combination mineral whose origins date back over two billion years ago. When tectonic plates shifted to form the Australian continent, deposits of red jasper, chatoyant tiger's eye and black hematite were forced together under great pressure. The ancient ornamental gemstone, sometimes called tiger's eye matrix, is the fascinating product of these monumental geologic events. Because the physical properties of each of the three minerals differ so greatly, only an experienced lapidary has the ability to work this material. The tiger iron used in the present lot is of exceptional quality, displaying flashing veins of golden-toned tiger's eye, red jasper of a saturated rust-red hue and metallic black hematite.

*Circumference measuring 44 in; Diameter measuring approximately 14 in*

**\$8,000 - 12,000**



1128<sup>Y</sup>



1129<sup>Y</sup>



1130<sup>Y</sup>

1128<sup>Y</sup>

**FOSSIL SHARK TOOTH AND GOLD NECKLACE BY IVANA CELLA**

Displaying an opulent use of high-karat gold, indicative of the 1970s era during which this necklace was designed, suspending eighteen fossil shark's teeth, *measuring up to 33.0 mm in height*, each capped in 18K yellow gold, suspended from an anchor link 18K yellow gold chain, accented with fifteen bright red, contour polished branch coral beads, with spring clasp, *signed Ivana Cella*. Total gross weight 868.5 grams, length 30 in

**\$1,500 - 2,000**  
To be sold without reserve

1129<sup>Y</sup>

**THREE FOSSIL SHARK TOOTH PENDANTS BY IVANA CELLA**

The first, having a small diamond accent to the cap, suspended from a substantial gold curb link chain, *total gross weight 19.9 grams, length 18 in*. Together with two fossil shark's teeth pendants, the larger one, *height 40.6mm*, with coral bead accents to the chain. Each necklace signed Ivana Cella. (3)

**\$600 - 800**  
To be sold without reserve

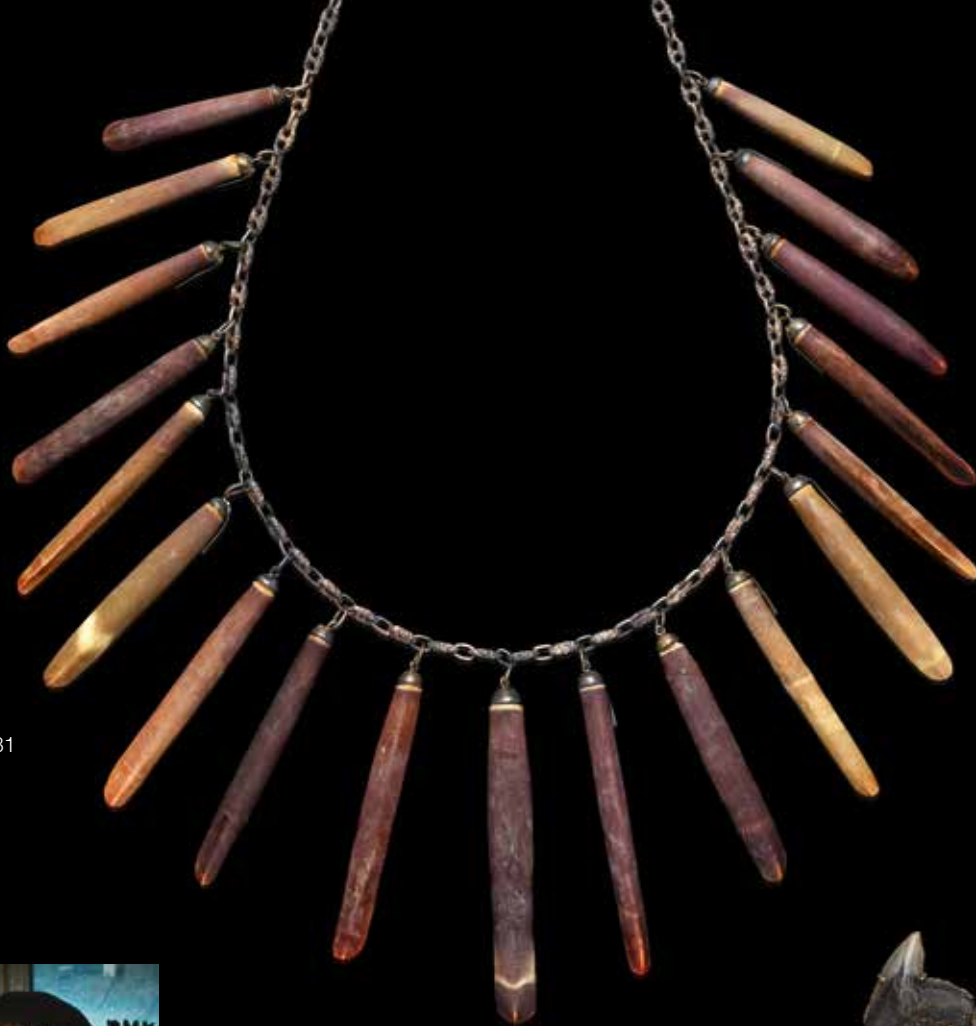
1130<sup>Y</sup>

**LARGE AND IMPRESSIVE FOSSIL SHARK'S TOOTH AND GOLD BROOCH BY IVANA CELLA**

Comprising three small fossil shark's teeth, mounted in a textured 18K yellow gold setting, with a small bezel-set orange coral eye, brooch fitting to the reverse side, *signed Ivana Cella*. Total gross weight 41.8 grams. Measuring 5 x 2 x 2 in

**\$1,000 - 1,500**  
To be sold without reserve

1131



## Ivana Cella (1932-2020)

Originally a native of Rome, Italy, jewelry designer Ivana Cella discovered fossilized shark's teeth on the beach near her home in Jacksonville, Florida. She created a line of jewelry incorporating these 100,000-year-old teeth which, during the fossilization process, became imbued with exotic colors of green-black, tan or brown, taking on the color of the substances and minerals nearby.

Ivana combined these exotic teeth with coral and enameled accents and a lavish use of substantial 18K gold fittings. This combination was a reflection of both her Italian background and indicative of the 1970s era during which time these jewels were designed when gold was substantially less expensive. Her line of jewelry was at that time carried by Bloomingdale's and Cartier in New York. Bonhams is honored to sell the remainder inventory of Ivana Cella.

1132<sup>Y</sup>



1131

### SEA URCHIN SPINE NECKLACE BY IVANA CELLA

A novel necklace with nineteen sea urchin spines, suspended from a textured silver chain, *stamped Ivana Cella*. Length 25 in

\$200 - 300

To be sold without reserve

1132<sup>Y</sup>

### FOSSIL SHARK'S TOOTH, GOLD AND CULTURED PEARL BROOCH BY IVANA CELLA

Of novel design, set with four fossil shark's teeth, set with six cultured pearls and centering on a carved coral rose, the 18K yellow gold mount of foliate design, *total gross weight approximately 31.8 grams, height 4 in.*

\$600 - 800

To be sold without reserve



1133



1134

1133

**FOUR CRAB CLAW PENDANTS BY IVANA CELLA**

Including a large crab claw, capped in 18K yellow gold, *signed Ivana Cella*, height 2 1/2 in; two crab claw pendants capped in silver and suspended from silver chains, length 25 in; and a longitudinal section of a crab claw, suspended from a gold chain, *signed Ivana Cella*, length 20 in. (4)

\$500 - 700

To be sold without reserve

1134

**ELEVEN FOSSIL SHARK'S TOOTH AND GOLD PENDANTS BY IVANA CELLA**

The largest, measuring 51.3 mm, accented with three turquoise cabochons, the others of various heights, all mounted in heavy 18K yellow gold mounts, each *signed Ivana Cella*. Total gross weight 161.1 grams (11)

\$2,000 - 3,000

To be sold without reserve

1135<sup>Y</sup>

**SIX ITEMS OF FOSSIL SHARK TOOTH JEWELRY BY IVANA CELLA**

Including a large shark's tooth pendant, height 64.3 mm, capped in a substantial amount of 18K yellow gold, *signed Ivana Cella*. Two shark's teeth which are accented with either turquoise or coral cabochons, and a third one in a plain gold setting, heights approximately 60.0mm, all *signed Ivana Cella*. An 18K yellow gold tie pin decorated with a small fossil shark's tooth; and a pendant suspending a fossil shark's tooth, with substantial 18K yellow gold mount, *signed Ivana Cella*, height 3 in. (6)

\$2,000 - 3,000

To be sold without reserve



1135<sup>Y</sup>



1136<sup>Y</sup>



1137

1136<sup>Y</sup>

**FOSSIL SHARK'S TOOTH PENDANT ON HEAVY GOLD CHAIN BY IVANA CELLA**

Featuring a large fossil shark's tooth, generously capped in 18K yellow gold, accented to the front with a bezel-set *Coralium rubrum* branch, signed *Ivana Cella*. Removable from a substantial 18K yellow gold anchor-link chain, weighing 33.5 grams (1.07 ozt). Height of tooth: 2 1/4 in. Total gross weight: 63.8 grams.

\$1,500 - 2,000

1137

**FOSSIL SHARK'S TOOTH AND GOLD NECKLACE BY IVANA CELLA**

Featuring a heavy and substantial 18K yellow gold chain, suspending 19 fossil shark's teeth, the largest of which measures 1 1/4 in in height, alternating with red and green enamel tropical fish and tortoise, signed *Ivana Cella*, length 27 in. Total gross weight 134.0 grams (4.31 ozt).

\$2,000 - 3,000

To be sold without reserve

1138

**ELEVEN FOSSIL SHARK'S TOOTH AND GOLD PENDANTS BY IVANA CELLA**

Each fossil shark's tooth capped with 18K yellow gold, the largest measuring 46.4mm, each signed by *Ivana Cella*. Total gross weight 123.4 grams. (11)

\$2,000 - 3,000

To be sold without reserve



1138



1139

1139

**GROUP OF FOSSIL SHARK'S TOOTH AND SILVER JEWELRY BY IVANA CELLA**

Including three fossil shark's tooth and silver necklaces, one bracelet and four rings. Each necklace suspending eight fossil shark's teeth, capped with silver, alternating with pendant charms in the form of articulated fish, suspended from a silver chain, *signed Ivana Cella. length 26 in.* Together with a bracelet and four fossil shark's tooth rings, *size 6. (8)*

**\$500 - 700**

**To be sold without reserve**



1140<sup>Y</sup>

1140<sup>Y</sup>

**FOUR FOSSIL SHARK'S TOOTH AND SILVER NECKLACES OR PENDANTS BY IVANA CELLA**

Including a large fossil shark's tooth, *height 2 in.*, capped in silver, suspended from a silver chain, *length 26 in.*; two fossil shark's tooth pendants, each capped in silver, red coral cabochon accents, *both signed Ivana Cella*; and a fossil shark's tooth, suspended from a heavy silver curb-link bracelet, *signed Ivana Cella, length 6 1/2 in.* (4)

**\$400 - 600**

**To be sold without reserve**





# Minerals including Native Metals

Lots 1141 - 1179



1141

1141

**GIANT AGATE GEODE SLAB**

*Brazil*

Displaying beautifully agatized borders, this massive slab shows quartz to the center and the full rind of the original boulder on all edges. Functional as a table top, this specimen is a beautiful as it is useful. *Measuring 32 x 30 x 2 in*

**\$1,500 - 2,000**

**To be sold without reserve**



1142

1142

**LARGE AGATE GEODE SLAB**

*Brazil*

A polished cross-section slab of oval outline, with quartz to the center and displaying an agatized border as well as the rind of the original boulder. With a natural cavity to the center having quartz crystal points and of a sufficiently large size to be used as an end table. *Measuring 25 x 16 x 2 in*

**\$600 - 800**

**To be sold without reserve**



1143

1143

**AGATE GEODE SLAB WITH AGATIZED BORDER**

*Brazil*

A polished cross-section slab of oval outline, with quartz to the center and displaying an agatized border as well as the rind of the original boulder. With a natural cavity to the center having quartz crystal points and of a sufficiently large size to be used as an end table. *Measuring 19 1/2 x 14 x 1 1/2 in*

**\$800 - 1,200**

**To be sold without reserve**



1144

1144

**LARGE AGATE GEODE SLAB WITH AGATIZED BORDER**

*Brazil*

A polished cross-section slab of oval outline, with quartz to the center and displaying fully agatized borders as well as the rind of the original boulder. Of sufficiently large size to be used as an end table. *Measuring 24 x 18 x 2 in*

**\$700 - 900**

**To be sold without reserve**

1145

**ZOOMORPHIC AMETHYST STALACTITE SPECIMEN**

*Uruguay*

Giving the appearance of a friendly dinosaur, the present amethyst specimen has both a mound formation and also a stalactite entirely covered in large, lustrous rich violet crystals. *Measuring 5 1/4 x 5 x 3 1/4 in*

**\$600 - 800**

**To be sold without reserve**



1145



1146<sup>W</sup>

**AMETHYST GEODE SPLIT--"THE BUTTERFLY" ON STAND**

*Ametista do Sul, Brazil*

An impressive specimen displayed in a novel fashion: these two book-matched amethyst geodes have been mounted on a black metal stand to look like butterfly wings. Each geode half is deep purple in color, with large crystals. They mount on a custom-made stand that enhances their shape. *Measuring approximately 25 x 14 x 67 in with the metal stand*

**\$2,000 - 3,000**



1147<sup>W</sup>

**LARGE AND IMPRESSIVE AMETHYST  
GEODE**

*Brazil*

The exterior painted in the traditional  
manner in charcoal grey to resemble the  
lava tubes in which these deposits of  
amethyst are found. *Measuring 62 1/2 x  
36 x 21 in*

**\$2,500 - 4,500**



1148

**LARGE AMETHYST GEODE ON CUSTOM  
METAL STAND**

*Brazil*

A large section of a geode wall displaying numerous large amethyst crystal points measuring up to 1 inch along the edge. The edges of the specimen have some agatization and have been well-polished to render this specimen a fine display piece.

*Measuring 22 x 17 x 9 in with the metal stand*

**\$800 - 1,200**

**To be sold without reserve**

*Offered on a custom-made black metal stand.*



1149<sup>W</sup>

**LARGE AMETHYST AND CALCITE  
SCULPTURE**

*Brazil*

A large amethyst geode section which has been fashioned in the shape of a heart. Displaying large and lustrous violet crystals a large calcite crystal graces the upper left hand corner. *Measuring 26 x 15 x 55 in with the stand*

**\$3,000 - 5,000**

*Offered on a custom-made black metal stand.*



1150

1150

**AMETHYST GEODE CATHEDRAL**

*Minas Gerais, Brazil*

Of tall, elegant form, this is a fine example of an amethyst geode which is known in the mineral hobby as a "cathedral" due to the elongated shape. The central cavity is lined with rich violet amethyst crystals. *Measuring 48 x 14 x 11 in*

**\$1,500 - 2,000**

**To be sold without reserve**



1151

1151

**AMETRINE CRYSTAL**

*Bolivia*

A cabinet-sized specimen with excellent translucency, displaying violet and golden zones. With well defined crystal faces on the pyramidal termination. With a flat base which allows the piece to stand on its own. *Weighing approximately 587.5 carats (117.6 grams) and measuring 3 1/4 x 1 1/2 x 1 1/4 in*

**\$700 - 900**





1152

**LARGE AQUAMARINE CRYSTAL**

*Brazil*

This monumentally large, single aquamarine crystal presents a classic mineral habit of six sides and a flat termination. With typical striations to the sides and a sea blue color, this enormous crystal displays some natural etching but good translucency nonetheless. *Weighing approximately 8.2 kilos (8200 grams, 18 lbs or 41,000 carats) and measuring 9 1/2 x 5 1/2 x 4 1/2 in*

**\$5,000 - 7,000**



1153

1153

**SEVEN AUSTRALIAN MINERAL SPECIMENS**

A group of small cabinet specimens including a smoky quartz reverse scepter from a geode in rhyolitic lava, *Mooralla, Victoria, Australia*, height 1 1/2 in; a Gondwanaland tree fern leaf fossil, *Dicroidium adontopteroides, Triassic flora, Stanhope mine, Avoca, Tasmania, Australia*, measuring 3 x 3 x 1 1/2 in; together with two opalized clamshells, *The Shell Patch, Coober Pedy, South Australia*, lengths 2 in and 1 1/2 in; an Atacamite (hydrous copper chloride), Mt. Gunson, South Australia, measuring 2 1/4 x 1 1/4 x 1/2 in; and a chrome cerussite, miniature specimen in a Perky box, collected early 1960s, *Kapi Mine, Dundas, Zeehan, Tasmania, Australia*; together with a vivid green chrysoprase specimen with polished face, measuring 3 1/4 x 1 1/4 x 1 1/2 in. (7)

\$600 - 800

To be sold without reserve



1154

1154

**GOLDEN BARITE ON CALCITE**

*Elk Creek, Meade County, South Dakota, USA*

A small to mid-sized cabinet specimen featuring several rich brown barite crystals with good transparency on a yellow calcite matrix. Measuring 4 x 3 x 2 1/2 in

\$400 - 600

To be sold without reserve



1155<sup>W</sup>

**CALCITE CAVE STALACTITE WITH DISPLAY CABINET**

*China*

A beautifully formed calcite cave stalactite which displays multiple intact points, measuring 35 x 15 x 8 in.

\$2,000 - 3,000

Accompanied by a custom fitted Chinese wooden base as well as a glazed and illuminated display cabinet measuring 67 1/2 x 24 x 15 1/2 in.

1155 (detail)



1155<sup>w</sup>



1156

1156

**UNCOMMON PURPLE GRAPE CHALCEDONY**

*Indonesia*

From a new find in 2016, this mid-sized cabinet specimen, which is capable of standing on its own, exhibits an excellent mound formation and horizon line. Consisting of clusters of bright lavender spherules of chalcedony, covering the front and back surfaces. This is an unusual color for the species. *Measuring 11 x 5 1/2 x 4 in*

**\$800 - 1,000**

**To be sold without reserve**



1157

1157

**CITRINE-ON-MATRIX**

*Brazil*

A large display specimen of mound formation with a good horizon line, covered entirely with small deep orange crystals of citrine on a matrix of white quartz. *Measuring 7 3/4 x 4 3/4 x 4 1/4 in*

**\$400 - 600**

**To be sold without reserve**



1158

1158

**LARGE DIOPTASE CRYSTAL**

*Namibia*

This small cabinet specimen is as fine an example as one can find of a single large crystal of diopside, with excellent termination and complex faces. The luster is vitreous and the color a rich green for which this mineral is so beloved. *Measuring 1 1/2 x 1 x 3/4 in*

**\$800 - 1,200**



1159



1160

1159

**GALENA ON MATRIX EX. BILL METROPOLIS COLLECTION**

*Madan, Bulgaria*

A mid-size specimen which possesses lustrous metallic luster to the galena crystals with minute sprays of quartz. *Weighing 3975 cts (792 grams) and measuring 5 x 4 x 2 in*

**\$1,200 - 1,500**

*Provenance: Ex. Bill Metropolis Collection*

*Accompanied by an original label noted DTBD1850.*

1160

**TWO DEMANTOID GARNET CRYSTAL CLUSTERS**

*Namibia*

Larger demantoid garnet crystal cluster, *weighing approximately 86.5 grams and measuring 2 1/2 x 2 x 1 in*, together with a smaller demantoid garnet crystal cluster, *weighing approximately 64.8 grams and measuring 2 1/4 x 1 3/4 x 1 in. (2)*

**\$1,500 - 2,000**



1161



1161

**CALIFORNIA GOLD-IN-QUARTZ  
"SLICKENSIDE" SPECIMEN**

Capable of standing on its own, of tapering wedge-form, having a black quartz face with "slickenside" formation and traces of leaf-gold. With gold protruding and visible on the side, in the white quartz matrix with black veining. *Weighing approximately 368.1 grams (11.83 oz) and measuring 3 3/4 x 3 x 1 1/2 in*

**\$1,500 - 2,000**



1162



1162

**COLLECTOR'S SET OF TWO  
VENEZUELAN GOLD CRYSTALS AND A  
DIAMOND CRYSTAL**

*Ikabaru Mine, Venezuela*

Two crystallized specimens each of thumbnail size with excellent formation. The gold crystal, *weighing 1.64 grams and 11.89 x 9.55 x 3.27mm*, together with another gold crystal *weighing 0.64 grams and measuring 17.80 x 4.50 x 2.84mm*. The octahedral diamond crystal, *weighing approximately 0.22 carats and measuring 4.09 x 2.92 x 2.27mm*. Offered in a lucite display case. (3)

**\$1,200 - 1,500**

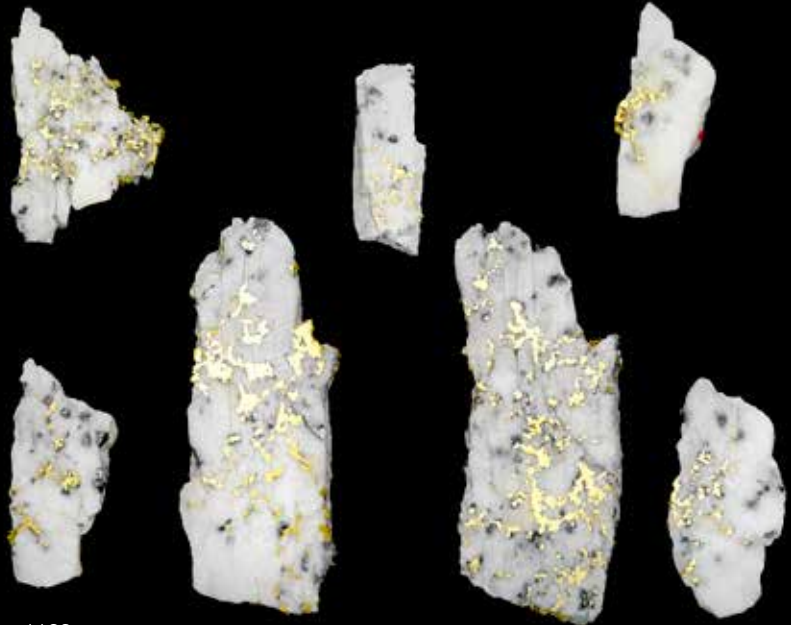
1163

**SEVEN POLISHED SLABS OR SPECIMENS OF GOLD-IN-QUARTZ**

*Original Sixteen to One Mine  
Alleghany, California*

Each having bright white quartz with extensive gold veining throughout and some minor spotting of arsenopyrite, polished on both faces with natural edges. Gross weight approximately 2.53 ozt (78.7 grams), approximate net weight of gold: 0.82 (25.8 grams). The largest, measuring 3 1/2 x 1 1/2 x 1/4 in (9.0 x 3.5 x 1.0cm). The second, gross weight 96.4 grams, approximate net weight of gold 1.07 ozt (33.28 grams). Together with five other smaller slabs or specimens with the following gross weights: 16.0 grams, 11.8 grams, 13.0 grams, 25.6 grams and 13.1 grams. Largest height: 3 1/2 in. Total gross weight of group of seven: 254.5 grams (8.18 ozt). (7)

**\$1,500 - 2,000**



1163

1164

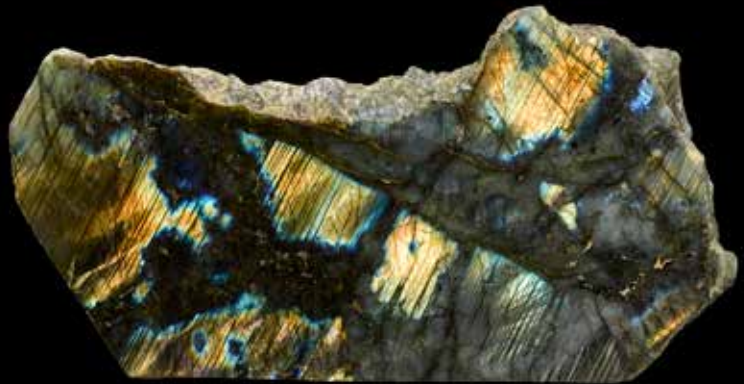
**LABRADORITE FREEFORM SCULPTURE**

*Madagascar*

Polished to a mirror-bright sheen, this is a fine specimen of labradorite. *Labradorescence* is an exclusive optical phenomenon seen only in labradorite, and this particular specimen is a fine example of its type. *Measuring 9 x 5 x 3 1/2 in*

**\$800 - 1,000**

**To be sold without reserve**



1164



1165

1165

**LARGE AND EXCEPTIONAL RAINBOW OBSIDIAN**

*Mexico*

Suitable for tabletop or shelf display, this fine specimen of rainbow obsidian has excellent purple banding and iridescence. Contour polished on all sides to reveal the fine patterns and coloration.

*Measuring 17 x 16 x 4 in*

**\$1,000 - 1,500**

**To be sold without reserve**



1166

1166

**DOUBLE-TERMINATED QUARTZ WITH OIL INCLUSION**

*Wadh, Khuzdar District, Balochistan, Pakistan*

A small cabinet specimen with excellent aesthetics of a double-terminated crystal atop another the larger crystal possessing an oil inclusion. As one moves the crystal, one can see the oil moving as well as bubbles/gas contained within. Under UV light, the oil glows blue. From a small and limited find, unlikely to be repeated. *Weighing approximately 8.6 grams (43.09 carats) and measuring 26.43 x 23.48 x 17.22mm*

**\$1,500 - 2,000**

1167

No lot





1168

1168  
**RUBY CRYSTAL CLUSTER--"THE RUBY CRYSTAL CATHEDRAL"**

*Chumar Mine in Ganesh Himal, Nepal*  
Giving the appearance of a cathedral with bell tower, this colorful ruby crystal cluster has a larger primary crystal and numerous smaller radiating crystals to the front as well as three mineral associates on the reverse side. *Weighing approximately 67.2g and measuring 2 1/2 x 1 1/2 x 1 in*

**\$1,000 - 1,200**



1169

1169  
**RUBY CRYSTAL FROM AN UNUSUAL LOCALITY**

*Greenland*  
A small cabinet-sized specimen with a polished face, allowing the hexagonal form of the ruby crystal to best be seen with its rich red interior. Natural surfaces to all other sides. *Weighing approximately 203.6 grams (1018.0 carats). Measuring 3 x 1 3/4 x 1 1/4 in*

**\$400 - 600**  
To be sold without reserve



1170

1170  
**PAINITE ALTERNATING TO RUBY**

*Wet Loo Mine, Burma*  
A fascinating small cabinet mineral specimen exhibiting the transition of a painite crystal to ruby. *Weighing approximately 27.4 grams and measuring 2 x 1 x 3/4 in*

**\$700 - 1,000**



1171

1171  
**RUBY-IN-MATRIX**

*Chumar Mine in Ganesh Himal, Nepal*  
A small cabinet specimen with an appealing bouquet of colors featuring multiple ruby crystals measuring up to 2 cm along the edge with mineral associates of marble and green fuchsite. *Weighing approximately 72.2 grams and measuring 2 x 1 1/2 x 1 1/2 in*

**\$700 - 900**



1172



1173



1174



1175

1172

**RUBY CRYSTAL**

*Dattaw Mine, Burma*

Originating from an historic mining area, this is an attractive medium size specimen consisting of intergrown ruby crystals of vivid pinkish red hue with some translucency at the edges. *Weighing approximately 97.6 grams and measuring 2 1/2 x 2 x 1 1/2 in*

**\$1,000 - 1,200**

1173

**CRYSTALLIZED RUBY**

*Mogok, Burma*

A miniature size specimen comprising intergrown ruby crystals of brilliant red color having good translucency, particularly at the edges. *Weighing approximately 10.6 grams and measuring 1 x 1 x 1/2 in*

**\$700 - 900**

1174

**CRYSTALLIZED RUBY**

*Luc Yen, Yen Bai, Vietnam*

A miniature size specimen showing a beautiful trigonal growth and it is capable of standing on its own. *Weighing approximately 41.7 grams and measuring 1 1/2 x 1 x 1 1/4 in*

**\$1,000 - 1,200**

1175

**YELLOW SAPPHIRE**

*Sri Lanka*

A classic elongated, double-terminated crystal with a bright yellow color and good translucency. Large yellow crystals can rarely be found outside of Sri Lanka anymore. *Weighing approximately 210 carats (42.8 grams). Height 2 in*

**\$700 - 900**



1176



1177

1176

**CRYSTALLIZED SILVER SPECIMEN**

*Morocco*

A cabinet specimen capable of standing on its own, with a large quantity of crystallized silver emerging from virgin white quartz. *Weighing approximately 132.1 grams and measuring 2 1/2 x 2 x 1 3/4 in*

**\$600 - 800**

**To be sold without reserve**

1177

**CRYSTALLIZED SILVER SPECIMEN**

*Morocco*

A highly aesthetic small cabinet specimen capable of standing on its own, possessing crystallized silver protruding from snowy white quartz with green matrix to the reverse side, giving an appearance of contemplation stone or scholar's rock. *Weighing approximately 264.8 grams and measuring 3 x 2 1/2 x 2 in*

**\$800 - 1,000**

**To be sold without reserve**



1178<sup>W</sup>

**MASSIVE STROMATOLITE SLAB**

*Late Precambrian*

*Minnesota*

*Stromatolites* were created by a form of blue-green algae believed to be among the earliest forms of life on Earth. The present 2 – 1.8-billion year-old specimen is one of the largest slabs of Minnesota stromatolite ever offered at auction. This museum quality specimen has been polished to a reflective sheen and exhibits alternating bands of red jasper, a form of microcrystalline quartz, and metal-gray toned hematite – materials which are characteristic of the locality. The combination of ferrous iron and oxygen caused precipitation of the hematite minerals along with the silica (quartz). *Measures 90 x 55 in*

**\$40,000 - 50,000**

# Malachite and Copper Related Minerals

Lots 1180 - 1204



1179



1180

1179

## **TANZANITE CRYSTAL**

*Arusha, Tanzania*

A small cabinet specimen, this fine crystal exhibits a glowing purple color and well-formed termination as well as typically striated sides. Weighing approximately 11.5 grams and measuring 30.71 x 15.54 x 15.29mm

**\$1,000 - 1,500**

1180

## **MASSIVE NATIVE COPPER SPECIMEN**

*Upper Peninsula, Michigan*

Characterized by a rich red and green patina and an extreme arborescent form, this is an example of a superb natural copper specimen from Michigan. All mining operations in Michigan are now closed. Weighing 76 lbs and measuring 52 x 31 in

**\$4,000 - 5,000**



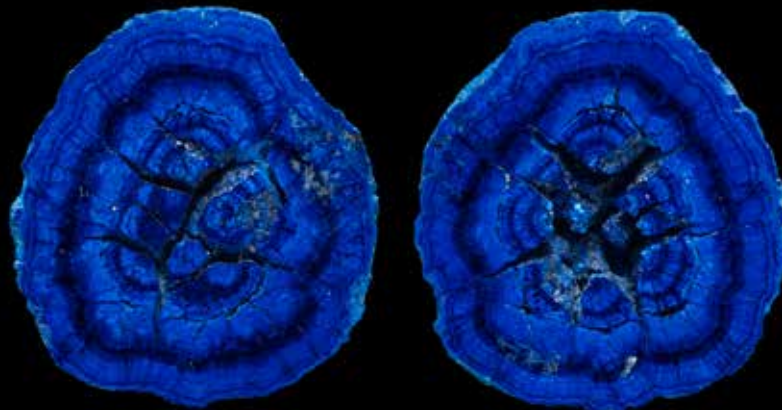
1181

**PERSIAN TURQUOISE NUGGET WITH POLISHED FACE**

*Ali-Mirsai-Kuh Mountains, Iran*

Rare to find in today's market, this large nodule of deep-colored Persian turquoise has an overall uniform color, as seen in a small sawn area which provides a window into the interior of the specimen. Weighing approximately 1253.0 carats (250.6 grams) and measuring 3 x 2 1/2 x 2 in

**\$5,000 - 7,000**



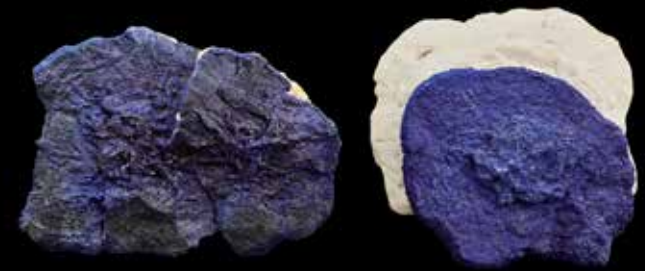
1182

1182

**AZURITE NODULE "SPLIT"**

*Rubtsovskiy Mine, Altaiskiy Krai, Russia*

A fine small cabinet specimen of classic form, a spherule of azurite, split into two halves, each face polished to reveal the central cavity with crystallization and the vivid blue color with concentric banding. Each half measuring 1 1/2 x 1 1/2 x 1/2 in (2)



1183

\$400 - 600

To be sold without reserve

1183

**TWO AZURITE "SUNS" IN KAOLINITE**

Including a double azurite "sun" in kaolinite, *Malbunka Copper Mine, Western Aranda country, Areyonga (Utju), Central Australia, Northern Territory, Australia, measuring 5 x 3 3/12 x 1/2 in*; together with another showing dramatic contrast of the vivid blue against the white kaolinite, *measuring 4 1/2 x 4 3/4 x 1 1/2 in. (2)*

\$400 - 600

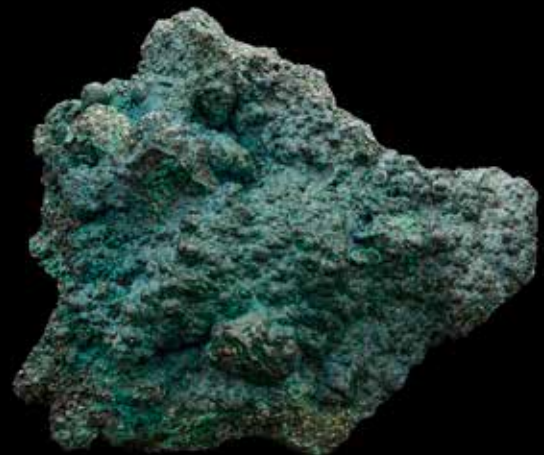
To be sold without reserve

1184

**CHRYSOCOLLA**

*Mine de L'Etolie, Lumbashi, Democratic Republic of the Congo, Africa*

A small cabinet specimen with a good horizon line, vibrant bluish-green color, displaying botryoidal growth habit, *measuring 5 x 4 x 2 in.*



1184

\$400 - 600

To be sold without reserve



1185

1185

**VERY LARGE CHRYSOCOLLA BOULDER WITH STAND**

*Democratic Republic of the Congo*

A very large and impressive display specimen of natural and unpolished chrysocolla with some malachite at the edges. *Measuring 28 x 18 1/2 x 8 3/4 in*

**\$3,000 - 4,000**

**To be sold without reserve**

*Accompanied by a custom-fitted black base.*



1186

1186

**LARGE CHRYSOCOLLA AND MALACHITE SPECIMEN**

*Democratic Republic of the Congo*

This fine, large display specimen exhibits a natural surface texture with layers of chrysocolla exposed at the edges. With black malachite areas and having a rough, natural texture to the reverse side. *Measuring 16 1/2 x 16 x 4 in*

**\$1,000 - 1,500**

**To be sold without reserve**

*Accompanied by a custom-fitted black base.*



1187

1187

**TWO LARGE CHRYSOCOLLA AND MALACHITE CONTEMPLATION STONES**

*Democratic Republic of the Congo*

Both of large scale suitable for tabletop or shelf display: the larger specimen, polished on all sides, *measuring 18 x 14 1/2 x 5 in*; and smaller specimen, also polished, *measuring 12 x 10 x 4 in.* (2)

**\$1,200 - 1,800**

**To be sold without reserve**

*Each accompanied by a custom-fitted black base.*





1188

1188

**MALACHITE AND CHRYSOCOLLA SPECIMEN**

*Democratic Republic of the Congo*

A large contemplation stone of vertical presentation, which displays a rough, convoluted surface texture and evidence of both malachite and chrysocolla. *Measuring 23 x 12 x 5 in*

**\$1,000 - 1,500**

**To be sold without reserve**

*Accompanied by a custom-fitted black base.*

1189

**TWO CHATOYANT MALACHITE SPECIMENS**

*Democratic Republic of the Congo*

Two fibrous specimens of malachite, displaying a shimmering cat's eye effect. *Measuring 11 1/2 x 11 x 8 in and 7 x 5 x 3 1/2 in (2)*

**\$800 - 1,500**

**To be sold without reserve**

*Each accompanied by a custom-fitted black base.*

1190

**MALACHITE SPECIMEN FEATURING MINIATURE STALACTITES**

*Democratic Republic of the Congo*

A fascinating specimen which features a cluster of miniature stalactites some of which are hollow inside. *Measuring 14 x 11 x 10 1/2 in*

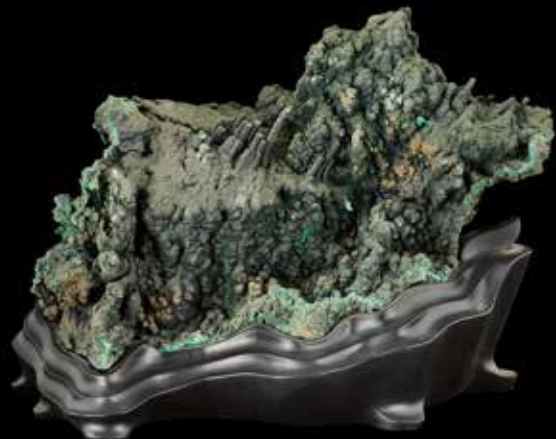
**\$800 - 1,200**

**To be sold without reserve**

*Accompanied by a custom-fitted black base.*



1189



1190



1191

1191

**LARGE MALACHITE WITH NUMEROUS "BULL'S EYES"**

Displaying excellent vertical presentation. Polished to the front and minimally to the back and exhibiting numerous bull's eye and concentric banding. *Measuring 16 x 10 x 8 in*

**\$1,200 - 1,800**  
To be sold without reserve

*Accompanied by a custom-fitted black base.*



1192

1192

**MALACHITE LANDSCAPE STONE**

*Democratic Republic of the Congo*

Of elegant elongated form, this tall specimen has a richly convoluted surface. *Measuring 16 x 6 x 4 in*

**\$1,000 - 1,500**  
To be sold without reserve

*Accompanied by a custom-fitted black base.*



1193

1193

**POLISHED MALACHITE**

*Democratic Republic of the Congo*

Rich patterns of concentric banding figure prominently in this mid-sized specimen of polished malachite. *Measuring 9 x 8 1/2 x 5 in*

**\$600 - 900**  
To be sold without reserve

*Accompanied by a custom-fitted black base.*



1194

1194

**MULTI-COLOR STALACTITE GROUP**

*Democratic Republic of the Congo*

A fascinating, large room-sized display specimen consisting of a cluster of stalactites, measuring up to 7 1/2 inches in height, having a rich coloration of ochre and black over its botryoidal growth habit. Measuring 10 x 9 x 8 in

**\$800 - 1,200**

**To be sold without reserve**

*Accompanied by a custom-fitted black base.*



1195

1195

**TWO BOTRYOIDAL MALACHITE SPECIMENS**

*Democratic Republic of the Congo*

A companion pair of specimens, each contour polished and exhibiting both malachite with chrysocolla, measuring 9 x 7 x 4 in and 8 1/2 x 7 1/2 x 3 1/2 in. (2)

**\$600 - 800**

**To be sold without reserve**

*Each specimen accompanied by a custom-fitted black base.*

1196

**LARGE HEART-SHAPED MALACHITE WITH CHRYSOCOLLA**

*Democratic Republic of the Congo*

A large specimen with pleasing aesthetics, polished to the face and exhibiting the presence of both malachite and chrysocolla. Measuring 15 x 11 x 4 in

**\$1,000 - 1,500**

**To be sold without reserve**

*Accompanied by a custom-fitted black base.*



1196



1197

1197

**LARGE MALACHITE WITH POLISHED FACE**

*Democratic Republic of the Congo*

Of horizontal presentation, this large boulder of malachite has been contour polished to reveal the fine concentric banding. *Measuring 16 x 11 x 4 in*

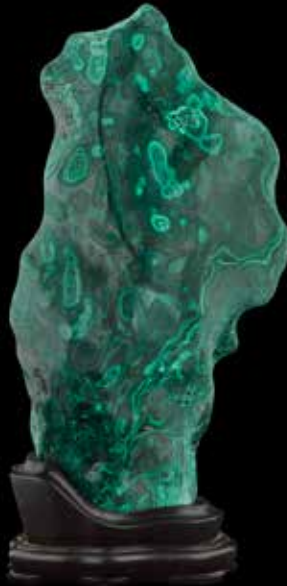
**\$1,500 - 2,000**

**To be sold without reserve**

*Accompanied by a custom-fitted black base.*



1198



1198

**TWO VERY LARGE MALACHITE SPECIMENS**

*Democratic Republic of the Congo*

Each of tall elegant form, contour polished and displaying excellent patterns of concentric banding. *Measuring 20 x 9 x 4 in and 16 x 9 x 6 in (2)*

**\$1,200 - 1,500**

**To be sold without reserve**

*Each accompanied by custom-fitted black base.*



1199



1199

**TWO MALACHITE STALACTITE GROUPS**

*Democratic Republic of the Congo*

Both large specimens exhibiting a fascinating multi-color oxidation and convoluted form. *Measuring 11 x 10 1/2 x 5 in and 10 1/2 x 9 x 6 in (2)*

**\$700 - 1,000**

**To be sold without reserve**

*Each accompanied by a custom-fitted black base.*



1200

1200

**LARGE AND IMPRESSIVE MALACHITE SPECIMEN**

*Democratic Republic of the Congo*

A very large specimen of rich green, contour polished to reveal bull's eyes and fascinating patterns of concentric banding. *Measuring 14 1/2 x 12 x 5 in*

**\$1,000 - 1,500**

**To be sold without reserve**

*Accompanied by a custom-fitted black base.*

1201

**TWO POLISHED MALACHITE SPECIMENS**

*Democratic Republic of the Congo*

A companion pair of specimens which are contour polished to reveal their patterns of concentric banding: one of vertical presentation, *measuring 14 x 7 1/2 x 4 in*, and the second of horizontal presentation, *measuring 11 x 7 1/2 x 6 1/2 in*. (2)

**\$1,000 - 1,500**

**To be sold without reserve**

*Each offered on a custom-fitted black bases.*

1202

**TWO LARGE MALACHITES**

*Democratic Republic of the Congo*

Including a vertical malachite specimen, *measuring 13 x 10 x 4 in*; together with a horizontal malachite specimen, *measuring 21 x 12 x 4 in*. (2)

**\$1,000 - 1,200**

**To be sold without reserve**

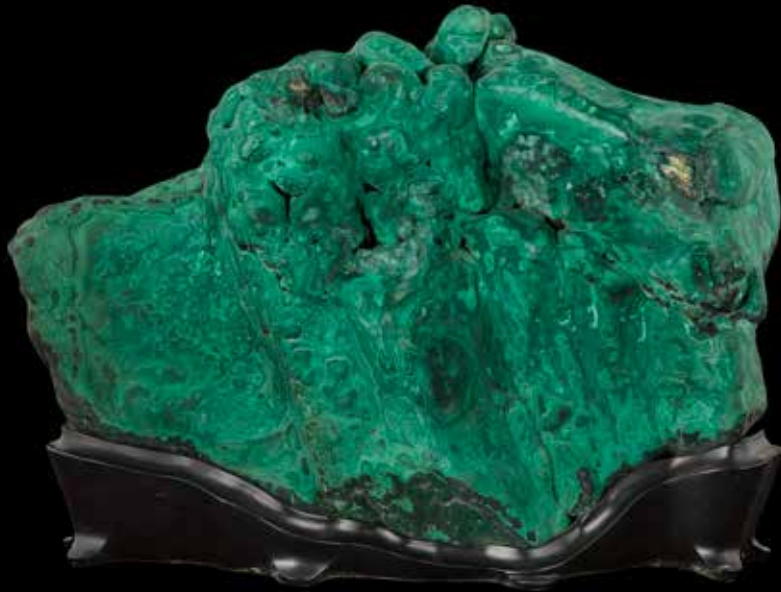
*Both accompanied by a custom-fitted black bases.*



1201



1202



1203



1204

1203

**LARGE MALACHITE SPECIMEN**

*Democratic Republic of the Congo*

Notable for its velvet surface texture which provides a matte and weathered appearance with its highly figured patterns, this large malachite is a decorative contemplation stone. *Measuring 16 x 13 x 4 in*

**\$1,500 - 2,000**

**To be sold without reserve**

*Accompanied by a custom-fitted black base.*

1204

**TWO POLISHED MALACHITE AND CHRYSOCOLLA SPECIMENS**

*Democratic Republic of the Congo*

Both contour polished, the larger one, *measuring 15 x 12 x 3 in*, and smaller one, *measuring 8 x 8 x 2 1/2 in*. (2)

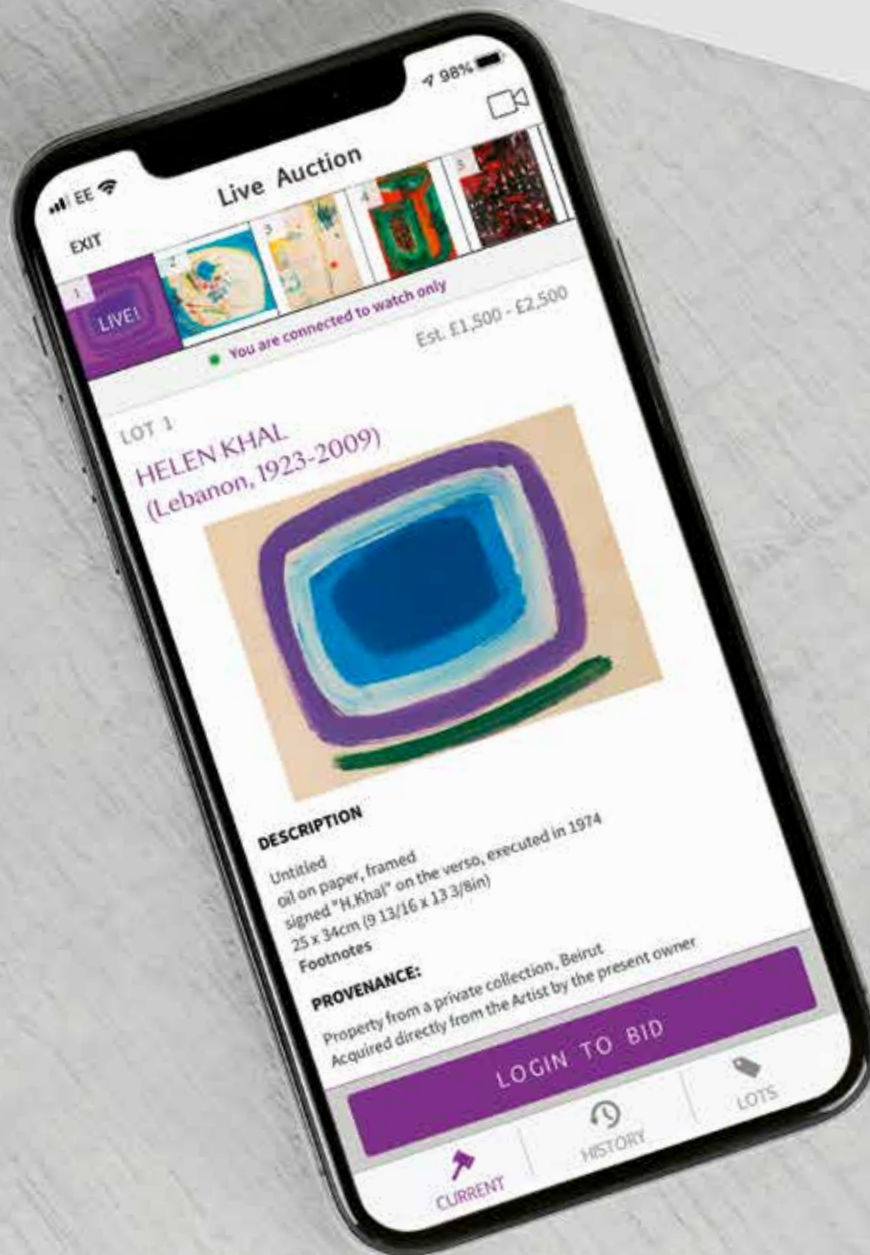
**\$800 - 1,000**

**To be sold without reserve**

*Each accompanied by a custom-fitted black base.*

# Bonhams

AUCTIONEERS SINCE 1793



Discover. Follow. Register. Bid.  
The new Bonhams app makes it easy to take part in our auctions, wherever you are.



# Bonhams

AUCTIONEERS SINCE 1793



## The World of Opals and Phenomenal Gems

Los Angeles | June 15, 2021

## Lapidary Arts, Gemstones and Minerals

Los Angeles | June 16, 2021



Download Bonhams app  
for iOS & Android

### INQUIRIES

+1 (323) 436 5421

[claudia.florian@bonhams.com](mailto:claudia.florian@bonhams.com)

[bonhams.com/naturalhistory](https://bonhams.com/naturalhistory)



# Conditions of sale

The following Conditions of Sale, as amended by any published or posted notices or verbal announcements during the sale, constitute the entire terms and conditions on which property listed in the catalog shall be offered for sale or sold by Bonhams & Butterfields Auctioneers Corp. and any consignor of such property for whom Bonhams acts as agent. By participating in this sale, you agree to be bound by these terms and conditions.

If live online bidding is available for the subject auction, additional terms and conditions of sale relating to online bidding will apply; see [www.bonhams.com/WebTerms](http://www.bonhams.com/WebTerms) for the supplemental terms. As used herein, "Bonhams," "we" and "us" refer to Bonhams & Butterfields Auctioneers Corp.

1. As used herein, the term "bid price" means the price at which a lot is successfully knocked down to the buyer. The term "purchase price" means the aggregate of (a) the bid price, (b) a PREMIUM retained by us and payable by the buyer (the "buyer's premium"), EQUAL TO 27.5% OF THE FIRST \$12,500 OF THE BID PRICE, PLUS 25% OF THE AMOUNT OF THE BID PRICE ABOVE \$12,500 UP TO AND INCLUDING \$600,000, PLUS 20% OF THE AMOUNT OF THE BID PRICE ABOVE \$600,000 UP TO AND INCLUDING \$6,000,000, PLUS 14.5% OF THE AMOUNT OF THE BID PRICE ABOVE \$6,000,000, and (c) unless the buyer is exempt by law from the payment thereof, any Alabama, Arizona, California, Colorado, Connecticut, Florida, Georgia, Hawaii, Idaho, Illinois, Iowa, Indiana, Kentucky, Louisiana, Maine, Maryland, Massachusetts, Michigan, Minnesota, Mississippi, Nebraska, Nevada, New Jersey, New York, North Carolina, Ohio, Oklahoma, Pennsylvania, Rhode Island, South Carolina, Texas, Utah, Virginia, Washington, D.C., Washington state, West Virginia, Wisconsin, Wyoming or other state or local sales tax (or compensating use tax) and other applicable taxes. With regard to New York sales tax, please refer to the "Sales and Use Tax" section of these Conditions of Sale.

2. In order to bid at the sale, prospective bidders must submit to Bonhams a completed bidder registration form (appearing at the end of this catalog) and any other requested information or references. New bidders and bidders who have not recently updated their registration information must pre-register to bid at least two business days before the sale. Individuals will be required to provide government-issued proof of identity and proof of address. Entity clients will be required to provide documentation including confirmation of entity registration showing the registered name, confirmation of registered address, documentary proof of officers and beneficial owners, proof of authority to transact on behalf of the entity and government-issued proof of identity for the individual who is transacting on the entity's behalf.

We may also request a financial reference and/or deposit from bidders before approving the bidder registration. In the event a deposit is submitted and you are not the successful bidder, your deposit will be returned to you. If you are the successful bidder, any such deposit will be credited to offset the appropriate portion of the purchase price.

We reserve the right to request further information, including regarding the source of funds, in order to complete bidder identification and registration procedures (including completing any anti-money laundering and/or anti-terrorism financing checks we may require) to our satisfaction. If our bidder identification and registration procedures are not satisfied, we may, in our sole discretion, decline to register any bidder or reject any bid or cancel any sale to such bidder.

Every bidder shall be deemed to act as a principal unless prior to the commencement of the sale there is a written acceptance by Bonhams of a bidder registration form completed and signed by the principal which clearly states that the authorized bidding agent is acting on behalf of the named principal. Absent such written acceptance by Bonhams, any person placing a bid as agent on behalf of another (whether or not such person has disclosed that fact or the identity of the principal) may be jointly and severally

liable with the principal under any contract resulting from the acceptance of a bid. Every bidder shall be responsible for any use of its assigned paddle or bidding account, regardless of the circumstances.

3. You represent and warrant that: (i) you have provided us with true and correct copies of valid identification and proof of residence and, if applicable, financial and/or corporate documents; (ii) neither you, your principal (if applicable, and subject to Bonhams' prior written acceptance pursuant to paragraph 2 above), nor any individual or entity with a beneficial or ownership interest in either or in the purchase transaction is on the Specially Designated Nationals List maintained by the Office of Foreign Assets Control of the U.S. Department of the Treasury nor subject to any other sanctions or embargo program or regulation in effect in the United States, European Union, England and Wales, or other applicable jurisdictions; (iii) if you are acting as an agent for a principal, you have conducted appropriate due diligence into such principal, and agree that Bonhams shall be entitled to rely upon such due diligence, you will retain adequate records evidencing such due diligence for a period of five (5) years following the consummation of the sale, and will make these records available for inspection upon Bonhams' request; (iv) neither the purchase transaction (including your bidding activity) nor the purchase funds are connected with nor derive from any criminal activity, and they are not designed to nor have they or shall they, violate the banking, anti-money laundering, or currency transfer laws or other regulations (including without limitation, import-export laws) of any country or jurisdiction, or further any other unlawful purpose, including without limitation collusion, anti-competitive activity, tax evasion or tax fraud.

You acknowledge and agree that we may rely upon the accuracy and completeness of the foregoing warranties.

4. On the fall of the auctioneer's hammer, the highest bidder shall have purchased the offered lot in accordance and subject to compliance with all of the conditions set forth herein and (a) assumes full risk and responsibility therefor, (b) if requested will sign a confirmation of purchase, and (c) will pay the purchase price in full or such part as we may require for all lots purchased. No lot may be transferred.

Unless otherwise agreed, payment in good, cleared funds is due and payable within five (5) business days following the auction sale. Whenever the buyer pays only a part of the total purchase price for one or more lots purchased, we may apply such payments, in our sole discretion, to the lot or lots we choose. Payment will not be deemed made in full until we have received good, cleared funds for all amounts due. Title in any purchased property will not pass until full and final payment has been received by Bonhams. Accounts must be settled in full before property is released to the buyer. In the event property is released earlier, such release will not affect the passing of title or the buyer's obligation to timely remit full payment.

We reserve the right to refuse to accept payment from a source other than the registered bidder or buyer of record. Once an invoice is issued, we cannot change the buyer's name on an invoice.

Payment for purchases must be made in the currency in which the sale is conducted. Bonhams' preferred payment method is by wire transfer. For final purchases exceeding US \$25,000.00, all payments must be in the form of wire transfer unless other arrangements have been approved in advance. For final purchases below US \$25,000.00, payment may also be made in or by the following methods:

- (i) Cash. Please note that the amount of cash that can be accepted from a given purchaser is limited to US \$5,000 per auction sale (whether by single or multiple related payments). If the amount payable exceeds that sum, the balance must be paid by another method.
- (ii) Cashier's check, money order, or personal check with approved credit drawn on a U.S. bank. A processing fee will be assessed on any returned checks.
- (iii) Visa, MasterCard, American Express or Discover debit

or credit card issued in the name of the purchaser or record. Only one debit or credit card may be used for payment of an account balance. This method of payment may not be available to first time purchasers.

To the fullest extent permitted by applicable law, the buyer grants us a security interest in the property, and we may retain as collateral security for the buyer's obligations to us, any property and all monies held or received by us for the account of the buyer, in our possession. We also retain all rights of a secured party under the Uniform Commercial Code (which shall mean the New York Uniform Commercial Code, except where the Uniform Commercial Code of another state governs the perfection of a security interest in collateral located in that state), and you agree that we may file financing statements without your signature. If the foregoing conditions or any other applicable conditions herein are not complied with, in addition to all other remedies available to us and the consignor by law, we may at our election: (a) hold the buyer liable for the full purchase price and any late charges, collection costs, attorneys' fees and costs, expenses and incidental damages incurred by us or the consignor arising out of the buyer's breach; (b) cancel the sale, retaining as liquidated damages all payments made by the buyer; and/or (c) cancel the sale and/or resell the purchased property, at public auction and/or by private sale, and in such event the buyer shall be liable for the payment of all consequential damages, including any deficiencies or monetary losses, and all costs and expenses of such sale or sales, our commissions at our standard rates, all other charges due hereunder, all late charges, collection costs, attorneys' fees and costs, expenses and incidental damages. In addition, where two or more amounts are owed in respect of different transactions by the buyer to us, to Bonhams 1793 Limited and/or to any of our other affiliates, subsidiaries or parent companies worldwide within the Bonhams Group, we reserve the right to apply any monies paid in respect of a transaction to discharge any amount owed by the buyer. If all fees, commissions, premiums, bid prices and other sums due to us from the buyer are not paid promptly as provided in these Conditions of Sale, we reserve the right to impose a finance charge equal to 1.5% per month (or, if lower, the maximum nonusurious rate of interest permitted by applicable law), on all amounts due to us beginning on the 31st day following the sale until payment is received, in addition to other remedies available to us by law.

5. We reserve the right to withdraw any property and to divide and combine lots at any time before such property's auction. Unless otherwise announced by the auctioneer at the time of sale, all bids are per lot as numbered in the catalog and no lots shall be divided or combined for sale.

6. We reserve the right to reject a bid from any bidder, to split any bidding increment, and to advance the bidding in any manner the auctioneer may decide. In the event of any dispute between bidders, or in the event the auctioneer doubts the validity of any bid, the auctioneer shall have sole and final discretion either to determine the successful bidder, re-open the bidding, or to cancel the sale and re-offer and resell the article in dispute. If any dispute arises after the sale, our sales records shall be conclusive in all respects.

We further reserve the right to cancel the sale of any property if (i) you are in breach of your representations and warranties as set forth in paragraph 3 above; (ii) we, in our sole discretion, determine that such transaction might be unlawful or might subject Bonhams or the consignor to any liability to any third party; or (iii) there are any other grounds for cancellation under these Conditions of Sale.

7. If we are prevented by fire, theft or any other reason whatsoever from delivering any property to the buyer or a sale otherwise cannot be completed, our liability shall be limited to the sum actually paid therefor by the buyer and shall in no event include any compensatory, incidental or consequential damages.

8. All lots in the catalog are offered subject to a reserve unless otherwise indicated in the catalog. The reserve is the

# Conditions of sale - Continued

confidential minimum bid price at which such lot will be sold and it does not to exceed the low estimate value for the lot. If a lot is offered subject to a reserve, we may implement such reserve by bidding on behalf of the consignor, whether by opening bidding or continuing bidding in response to other bidders until reaching the reserve. If we have an interest in an offered lot and the proceeds therefrom other than our commissions, we may bid up to the reserve to protect such interest. If the auctioneer determines that any opening or subsequent bid is below the reserve for a lot, (s)he may reject such opening bid and withdraw the item from sale. **CONSIGNORS ARE NOT ALLOWED TO BID ON THEIR OWN ITEMS.**

9. Other than as provided in the Limited Right of Rescission with respect to identification of authorship, all property is sold "AS IS" and any statements contained in the catalog or in any advertisement, bill of sale, announcement, condition report, invoice or elsewhere as to period, culture, source, origin, media, measurements, size, quality, rarity, provenance, importance, exhibition and literature of historical relevance, merchantability, fitness for a particular purpose, or physical condition ARE QUALIFIED STATEMENTS OF OPINION AND NOT REPRESENTATIONS, WARRANTIES, OR ASSUMPTION OF LIABILITY. Neither Bonhams nor the consignor shall be responsible for any error or omission in the catalog description of any property. No employee or agent of Bonhams is authorized to make on our behalf or on that of the consignor any representation or warranty, oral or written, with respect to any property.

10. All purchased property shall be removed from the premises at which the sale is conducted by the date(s) and time(s) set forth in the "Buyer's Guide" portion of this catalog. If not so removed, daily storage fees will be payable to us by the buyer as set forth therein. We reserve the right to transfer property not so removed to an offsite warehouse at the buyer's risk and expense, as set forth in more detail in the "Buyer's Guide." Packing and handling of purchased lots are the responsibility of the buyer and at the buyer's entire risk, as are the identification, application for, and cost(s) of obtaining of any necessary export, import, restricted material (e.g. endangered species) or other permit for such lots.

For an additional fee, Bonhams may provide packing and shipping services for certain items as noted in the "Buyer's Guide" section of the catalog.

11. The copyright in the text of the catalog and the photographs, digital images and illustrations of lots in the catalog belong to Bonhams or our licensors. You will not reproduce or permit anyone else to reproduce such text, photographs, digital images or illustrations without our prior written consent. Bonhams and the consignor make no representation or warranty as to whether the buyer acquires any copyrights on the purchase of an item of Property.

12. Bonhams may, in our discretion, as a courtesy and free of charge, execute bids on your behalf if so instructed by you, provided that neither Bonhams nor our employees or agents will be liable for any error or default (whether human or otherwise) in doing so or for failing to do so. Without limiting the foregoing, Bonhams (including our agents and employees) shall not be responsible for any problem relating to telephone, online, or other bids submitted remotely through any means, including without limitation, any telecommunications or internet fault or failure, or breakdown or problems with any devices or online platforms, including third-party online platforms, regardless of whether such issue arises with our, your, or such third-party's technology, equipment, or connection. By participating at auction by telephone or online, bidders expressly consent to the recording of their bidding sessions and related communications with Bonhams and our employees and agents, and acknowledge their acceptance of these Conditions of Sale as well as any additional terms and conditions applicable to any such bidding platform or technology.

13. These Conditions of Sale shall bind the successors

and assigns of all bidders and buyers and inure to the benefit of our successors and assigns. No waiver, amendment or modification of the terms hereof (other than posted notices or oral announcements during the sale) shall bind us unless specifically stated in writing and signed by us. No act or omission of Bonhams, its employees or agents, nor any failure thereof to exercise any remedy hereunder, shall operate or be deemed to operate as a waiver of Bonhams' rights under these Conditions of Sale. If any part of these Conditions of Sale is for any reason invalid or unenforceable, the rest shall remain valid and enforceable.

14. These Conditions of Sale and the buyer's and our respective rights and obligations hereunder shall be governed by and construed and enforced in accordance with the laws of the State of New York. Any dispute, controversy or claim arising out of or relating to this agreement, or the breach, termination or validity thereof, brought by or against Bonhams (but not including claims brought against the consignor by the buyer of lots consigned hereunder) shall be resolved by the procedures set forth below.

15. You accept and agree that Bonhams will hold and process your personal information and may share and use it as required by law and as described in, and in line with Bonhams' Privacy Policy, available at website at [www.bonhams.com/legals/](http://www.bonhams.com/legals/). If you desire access, update, or restriction to the use of your personal information, please email [data.protection@bonhams.com](mailto:data.protection@bonhams.com).

## SALES AND USE TAX

New York sales tax is charged on the hammer price, buyer's premium and any other applicable charges on any property collected or delivered in New York State, regardless of the state or country in which the buyer resides or does business. Buyers who make direct arrangements for collection by a shipper who is considered a "private" or "contract" carrier by the New York Department of Taxation and Finance will be charged New York sales tax, regardless of the destination of the property. Property collected for delivery to a destination outside of New York by a shipper who is considered a "common carrier" by the New York Department of Taxation and Finance (e.g. United States Postal Service, United Parcel Service, and FedEx) is not subject to New York sales tax, but if it is delivered into any state in which Bonhams is registered or otherwise conducts business sufficient to establish a nexus, Bonhams may be required by law to collect and remit the appropriate sales tax in effect in such state. Property collected for delivery outside of the United States by a freight-forwarder who is registered with the Transportation Security Administration ("TSA") is not subject to New York sales tax.

## MEDIATION AND ARBITRATION PROCEDURES

(a) Within 30 days of written notice that there is a dispute, the parties or their authorized and empowered representatives shall meet by telephone and/or in person to mediate their differences. If the parties agree, a mutually acceptable mediator shall be selected and the parties will equally share the fees and expenses of mediation. The mediator shall be a retired judge or an attorney familiar with commercial law and trained in or qualified by experience in handling mediations. Any communications made during the mediation process shall not be admissible in any subsequent mediation, arbitration or judicial proceeding. All proceedings and any resolutions thereof shall be confidential, and the terms governing arbitration set forth in paragraph (c) below shall govern.

(b) If mediation does not resolve all disputes between the parties, or in any event no longer than 60 days after receipt of the written notice of dispute referred to above, the parties shall submit the dispute for binding arbitration before a single neutral arbitrator. Such arbitrator shall be a retired judge or an attorney familiar with commercial law and trained in or qualified by experience in handling arbitrations. Such arbitrator shall make all appropriate disclosures required by law. The arbitrator shall be drawn from a panel of a national or international arbitration service agreed to by the parties,

and shall be selected as follows: (i) If the arbitration service has specific rules or procedures, those rules or procedures shall be followed; (ii) If the arbitration service does not have rules or procedures for the selection of an arbitrator, the arbitrator shall be an individual jointly agreed to by the parties. If the parties cannot agree on an arbitration service, the arbitration shall be conducted by Judicial Arbitration and Mediation Services, Inc. ("JAMS") or another national or international alternative dispute resolution ("ADR") provider of Bonhams' choice, and the arbitrator shall be selected in accordance with JAMS' Streamlined Arbitration Rules and Procedures or the rules of the other ADR provider selected by Bonhams. The arbitrator's award shall be in writing and shall set forth findings of fact and legal conclusions.

(c) Unless otherwise agreed to by the parties or provided by the published rules of the arbitration service:

- (i) The arbitration shall occur within 60 days following the selection of the arbitrator;
- (ii) The arbitration shall be conducted in New York, New York; and
- (iii) Discovery and the procedure for the arbitration shall be as follows:
  - A. All arbitration proceedings shall be confidential;
  - B. The parties shall submit written briefs to the arbitrator no later than 15 days before the arbitration commences;
  - C. Discovery, if any, shall be limited as follows:
    - (I) Requests for no more than 10 categories of documents, to be provided to the requesting party within 14 days of written request therefor;
    - (II) No more than two (2) depositions per party, provided however, the deposition(s) are to be completed within one (1) day;
    - (III) Compliance with the above shall be enforced by the arbitrator in accordance with New York law;
    - D. Each party shall have no longer than eight (8) hours to present its position. The entire hearing before the arbitrator shall not take longer than three (3) consecutive days;
    - E. The award shall be made in writing no more than 30 days following the end of the proceeding. Judgment upon the award rendered by the arbitrator may be entered by any court having jurisdiction thereof.

To the fullest extent permitted by law, and except as required by applicable arbitration rules, each party shall bear its own attorneys' fees and costs in connection with the proceedings and shall share equally the fees and expenses of the arbitration.

## LIMITED RIGHT OF RESCISSION

If within one (1) year from the date of sale, the original buyer (a) gives written notice to us alleging that the identification of Authorship (as defined below) of such lot as set forth in the UPPERCASE TYPE heading of the catalog description of such lot (as amended by any saleroom notices or verbal announcements during the sale) is not substantially correct based on a fair reading of the catalog (including the terms of any glossary contained therein), and (b) within 10 days after such notice returns the lot to us in the same condition as at the time of sale, and (c) establishes the allegation in the notice to our satisfaction (including by providing one or more written opinions by recognized experts in the field, as we may reasonably require), then the sale of such lot will be rescinded and, unless we have already paid to the consignor monies owed him in connection with the sale, the original purchase price will be refunded.

If, prior to receiving such notice from the original buyer alleging such defect, we have paid the consignor monies owed him in connection with the sale, we shall pay the original buyer the amount of our commissions, any other sale proceeds to which we are entitled and applicable taxes received from the buyer on the sale and make demand on the consignor to pay the balance of the original purchase price to the original buyer. Should the consignor fail to pay such amount promptly, we may disclose the identity of

# Conditions of sale - Continued

the consignor and assign to the original buyer our rights against the consignor with respect to the lot the sale of which is sought to be rescinded. Upon such disclosure and assignment, any liability of Bonhams as consignor's agent with respect to said lot shall automatically terminate.

The foregoing limited right of rescission is available to the original buyer only and may not be assigned to or relied upon by any subsequent transferee of the property sold. The buyer hereby accepts the benefit of the consignor's warranty of title and other representations and warranties made by the consignor for the buyer's benefit. Nothing in this section shall be construed as an admission by us of any representation of fact, express or implied, obligation or responsibility with respect to any lot. **THE BUYER'S SOLE AND EXCLUSIVE REMEDY AGAINST BONHAMS FOR ANY REASON WHATSOEVER IS THE LIMITED RIGHT OF RESCISSION DESCRIBED IN THIS SECTION.**

"Authorship" means only the identity of the creator, the period, culture and source or origin of the lot, as the case may be, as set forth in the UPPERCASE TYPE heading of the print catalog entry. The right of rescission does not extend to: (a) works of art executed before 1870 (unless these works are determined to be counterfeits created since 1870), as this is a matter of current scholarly opinion which can change; (b) titles, descriptions, or other identification of offered lots, which information normally appears in lower case type below the UPPERCASE TYPE heading identifying the Authorship; (c) Authorship of any lot where it was specifically mentioned that there exists a conflict of specialist or scholarly opinion regarding the Authorship of the lot at the time of sale; (d) Authorship of any lot which as of the date of sale was in accordance with the then generally-accepted opinion of scholars and specialists regarding the same; or (e) the identification of periods or dates of creation in catalog descriptions which may be proven inaccurate by means of scientific processes that are not generally accepted for use until after publication of the catalog in which the property is offered or that were unreasonably expensive or impractical to use at the time of such publication.

## LIMITATION OF LIABILITY

EXCEPT AS EXPRESSLY PROVIDED ABOVE, ALL PROPERTY IS SOLD "AS IS." NEITHER BONHAMS NOR THE CONSIGNOR MAKES ANY REPRESENTATION

OR WARRANTY, EXPRESS OR IMPLIED, AS TO THE MERCHANTABILITY, FITNESS OR CONDITION OF THE PROPERTY OR AS TO THE CORRECTNESS OF DESCRIPTION, GENUINENESS, ATTRIBUTION, PROVENANCE OR PERIOD OF THE PROPERTY OR AS TO WHETHER THE BUYER ACQUIRES ANY COPYRIGHTS OR OTHER INTELLECTUAL PROPERTY RIGHTS IN LOTS SOLD OR AS TO WHETHER A WORK OF ART IS SUBJECT TO THE ARTIST'S MORAL RIGHTS OR OTHER RESIDUAL RIGHTS OF THE ARTIST. THE BUYER EXPRESSLY ACKNOWLEDGES AND AGREES THAT IN NO EVENT SHALL BONHAMS BE LIABLE FOR ANY DAMAGES INCLUDING, WITHOUT LIMITATION, ANY COMPENSATORY, INCIDENTAL OR CONSEQUENTIAL DAMAGES. IN NO EVENT SHALL THE AGGREGATE LIABILITY OF BONHAMS AND ITS CONSIGNOR TO A PURCHASER EXCEED THE PURCHASE PRICE ACTUALLY PAID FOR A DISPUTED ITEM OF PROPERTY.

---

## Seller's guide

### SELLING AT AUCTION

Bonhams can help you every step of the way when you are ready to sell art, antiques and collectible items at auction. Our regional offices and representatives throughout the US are available to service all of your needs. Should you have any further questions, please visit our website at [www.bonhams.com/us](http://www.bonhams.com/us) for more information or call our Client Services Department at +1 (323) 850 7500.

### AUCTION ESTIMATES

The first step in the auction process is to determine the auction value of your property. Bonhams' world-renowned specialists will evaluate your special items at no charge and in complete confidence. You can obtain an auction estimate in many ways:

- Attend one of our Auction Evaluation Events held regularly at our galleries and in other major metropolitan areas. The updated schedule for Bonhams Auction Evaluation Events is available at [www.bonhams.com/us](http://www.bonhams.com/us).
- Call our Client Services Department to schedule a private appointment at one of our galleries. If you have a large collection, our specialists can travel, by appointment, to evaluate your property on site.
- Send clear photographs to us of each individual item, including item dimensions and other pertinent information with each picture. Photos should be sent to Bonhams' address in envelopes marked as "photo auction estimate". Alternatively, you can submit your request using our online form at [www.bonhams.com/us](http://www.bonhams.com/us). Digital images may be attached to the form. Please limit your images to no more than five (5) per item.

### CONSIGNING YOUR PROPERTY

After you receive an estimate, you may consign your property to us for sale in the next appropriate auction. Our staff assists you throughout the process, arranging transportation of your items to our galleries (at the consignor's expense), providing a detailed inventory of your consignment, and reporting the prices realized for each lot. We provide secure storage for your property in our warehouses and all items are insured throughout the auction process. You will receive payment for your property approximately 35 days after completion of sale.

Sales commissions vary with the potential auction value of the property and the particular auction in which the property is offered. Please call us for commission rates.

### PROFESSIONAL APPRAISAL SERVICES

Bonhams' specialists conduct insurance and fair market value appraisals for private collectors, corporations, museums, fiduciaries and government entities on a daily basis. Insurance appraisals, used for insurance purposes, reflect the cost of replacing property in today's retail market. Fair market value appraisals are used for estate, tax and family division purposes and reflect prices paid by a willing buyer to a willing seller.

When we conduct a private appraisal, our specialists will prepare a thorough inventory listing of all your appraised property by category. Valuations, complete descriptions and locations of items are included in the documentation.

Appraisal fees vary according to the nature of the collection, the amount of work involved, the travel distance, and whether the property is subsequently consigned for auction.

Our appraisers are available to help you anywhere and at any time. Please call our Client Services Department to schedule an appraisal.

### ESTATE SERVICES

Since 1865, Bonhams has been serving the needs of fiduciaries – lawyers, trust officers, accountants and executors – in the disposition of large and small estates. Our services are specially designed to aid in the efficient appraisal and disposition of fine art, antiques, jewelry, and collectibles. We offer a full range of estate services, ranging from flexible financial terms to tailored accounting for heirs and their agents to world-class marketing and sales support.

For more information or to obtain a detailed Trust and Estates package, please visit our website at [www.bonhams.com/us](http://www.bonhams.com/us) or contact our Client Services Department.

# Buyer's guide

## BUYING AND BIDDING AT AUCTION

Whether you are an experienced bidder or an enthusiastic novice, auctions provide a stimulating atmosphere unlike any other. Bonhams previews and sales are free and open to the public. As you will find in these directions, bidding and buying at auction is easy and exciting. Should you have any further questions, please visit our website at [www.bonhams.com](http://www.bonhams.com) or call our Client Services Department at +1 (212) 644 9001.

### Catalogs

Before each auction we publish illustrated catalogs. Our catalogs provide descriptions and estimated values for each "lot." A lot may refer to a single item or to a group of items auctioned together. The catalogs also include the dates and the times for the previews and auctions. We offer our catalogs by subscription or by single copy. For information on subscribing to our catalogs, you may refer to the subscription form in this catalog, call our Client Services Department, or visit our website at [www.bonhams.com/us](http://www.bonhams.com/us).

### Previews

Auction previews are your chance to inspect each lot prior to the auction. We encourage you to look closely and examine each object on which you may want to bid so that you will know as much as possible about it. Except as expressly set forth in the Conditions of Sale, items are sold "as is" and with all faults; illustrations in our catalogs, website and other materials are provided for identification only. At the previews, our staff is always available to answer your questions and guide you through the auction process. Condition reports may be available upon request.

### Estimates

Bonhams catalogs include low and high value estimates for each lot, exclusive of the buyer's premium and tax. The estimates are provided as an approximate guide to current market value based primarily on previous auction results for comparable pieces, and should not be interpreted as a representation or prediction of actual selling prices. They are determined well in advance of a sale and are subject to revision. Please contact us should you have any questions about value estimates.

### Reserve

All lots in a catalog are subject to a reserve unless otherwise indicated. The reserve is the minimum price that the seller is willing to accept for a lot. This amount is confidential and does not exceed the low estimated value.

### Auction House's Interest in Property Offered at Auction

On occasion, Bonhams may offer property in which it has an ownership interest in whole or in part or otherwise has an economic interest. Such property, if any, is identified in the catalog with a ▲ symbol next to the lot number(s). Bonhams may also offer property for a consignor that has been guaranteed a minimum price for its property by Bonhams or jointly by Bonhams and a third party. Bonhams and any third parties providing a guarantee may benefit financially if the guaranteed property is sold successfully and may incur a financial loss if its sale is not successful. Such property, if any, is identified in the catalog with a symbol next to the lot number(s).

### Bidding at Auction

At Bonhams, you can bid in many ways: in person, via absentee bid, over the phone, or via Bonhams' live online bidding facility. Absentee bids can be submitted in person, online, or via email. Irrespective of previous bidding activity a valid Bonhams client account is required to participate in bidding activity. You will be required to provide government-issued proof of identity and residence, and if you are a company, your certificate of incorporation or equivalent documentation with your name and registered address, government issued proof of your current address, documentary proof of your beneficial owners and directors, and proof of authority to transact. By bidding at auction, whether in person or by agent, by absentee bid, telephone, online or other means, the buyer or bidder agrees to be bound by the Conditions of Sale. Lots are auctioned in consecutive numerical order as they appear in the catalog. Bidding normally begins below the low estimate. The auctioneer will accept bids from interested parties present in the saleroom, from telephone bidders, and from absentee bidders who have left written bids in advance of the sale. The auctioneer may also execute bids on behalf of the consignor up to the amount of the reserve, but never above it. We assume no responsibility for failure to execute bids for any reason whatsoever.

### In Person

If you are planning to bid at auction for the first time, you will need to register at the reception desk in order to receive a numbered bid card. To place a bid, hold up your card so that the auctioneer can clearly see it. Decide on the maximum auction price that you wish to pay, exclusive of buyer's premium and tax, and continue bidding until your bid prevails or you reach your limit. If you are the successful bidder on a lot, the auctioneer will acknowledge your paddle number and bid amount.

### Absentee Bids

As a service to those wishing to place bids, we may at our discretion accept bids without charge in advance of auction online or in writing on bidding forms available from us. "Buy" bids will not be accepted; all bids must state the highest bid price the bidder is willing to pay. Our auction staff will try to bid just as you would, with the goal of obtaining the item at the lowest bid price possible. In the event identical bids are submitted, the earliest bid submitted will take precedence. Absentee bids shall be executed in competition with other absentee bids, any applicable reserve, and bids from other auction participants. A friend or agent may place bids on your behalf, provided that we have received your written authorization prior to the sale. Absentee bid forms are available in our catalogs, online at [www.bonhams.com/us](http://www.bonhams.com/us), at offsite auction locations and at our Los Angeles, San Francisco and New York galleries.

### By Telephone

We can arrange for you to bid by telephone. To arrange for a telephone bid, please contact our Client Services Department a minimum of 24 hours prior to the sale.

### Online

We offer live online bidding for most auctions and accept absentee bids online for all our auctions. Please visit [www.bonhams.com/us](http://www.bonhams.com/us) for details.

### Bid Increments

Bonhams generally uses the following increment multiples as bidding progresses:

\$50-200.....	by \$10s
\$200-500.....	by \$20/50/80s
\$500-1,000.....	by \$50s
\$1,000-2,000.....	by \$100s
\$2,000-5,000.....	by \$200/500/800s
\$5,000-10,000.....	by \$500s
\$10,000-20,000.....	by \$1,000s
\$20,000-50,000.....	by \$2,000/5,000/8,000s
\$50,000-100,000.....	by \$5,000s
\$100,000-200,000.....	by \$10,000s
above \$200,000.....	at auctioneer's discretion

**The auctioneer may split or reject any bid at any time at his or her discretion as outlined in the Conditions of Sale.**

### Currency Converter

Solely for the convenience of bidders, a currency converter may be provided at Bonhams' auctions. The rates quoted for conversion of other currencies to U.S. Dollars are indications only and should not be relied upon by a bidder, and neither Bonhams nor its agents shall be responsible for any errors or omissions in the operation or accuracy of the currency converter.

### Buyer's Premium

A buyer's premium is added to the winning bid price of each individual lot purchased, at the rates set forth in the Conditions of Sale. The winning bid price plus the premium constitute the purchase price for the lot. Applicable sales taxes are computed based on this figure, and the total becomes your final purchase price.

Unless specifically illustrated and noted, fine art frames are not included in the estimate or purchase price. Bonhams accepts no liability for damage or loss to frames during storage or shipment.

All sales are final and subject to the Conditions of Sale found in our catalogs, on our website, and available at the reception desk.

### Payment

Payment may be made to Bonhams by cash, checks drawn on a U.S. bank, money order, wire transfer, or by Visa, MasterCard, American Express or Discover credit or charge card or debit card. All items must be paid for within 5 business days of the sale. Please note that payment by personal or business check may result in property not being released until purchase funds clear our bank. For payments sent by mail, please remit to Bonhams Client Services Department, 7601 W Sunset Boulevard, Los Angeles, California 90046.

### Sales Tax

Residents of states listed in Paragraph 1 of the Conditions of Sale must pay applicable sales tax. Other state or local taxes (or compensation use taxes) may apply. Sales tax will be automatically added to the invoice unless a valid resale number has been furnished or the property is shipped via common carrier to destinations outside the states listed in the Conditions of Sale. If you wish to use your resale license please contact Client Services for our form.

### Collection of Purchases

Scheduling an appointment and payment in full prior to arrival will facilitate the quick release of your property. If you are sending a third-party to collect, please provide details to our Client Services Department at [invoices.us@bonhams.com](mailto:invoices.us@bonhams.com) prior to your scheduled pickup or we will be unable to release your property.

For your convenience, pre-allocated 30-minute collection time slots are available Monday through Friday between 9am – 4:30pm. To schedule collection of purchases, please contact our Client Services Department on +1 (323) 850 7500.

### Shipping & Removal

Bonhams can accommodate shipping for certain items. If you wish to receive a Bonhams Shipping quote, please confirm as such at the time of registration. Carriers are not permitted to deliver to PO boxes.

International buyers are responsible for all import/export customs duties and taxes. An invoice stating the actual purchase price will accompany all international purchases.

### Handling and Storage Charges

**Storage charges of \$5 per lot, per day will begin accruing for any lots not collected within 14 calendar days of the auction.**

Bonhams reserve the right to remove uncollected sold lots to the warehouse of our choice at the buyer's risk and expense. Further transfer, handling, storage and full value protection fees will apply if move to a warehouse of our choice.

# Oversized (W) Lots – Collection and Storage

Please note that all lots marked with a **W** in the catalogue are oversized and subject to additional storage and shipping methods. All additional lots purchased with **W** lots are considered group lots and will be subject to the same terms as **W** lots.

We encourage you to collect **W** lots from Bonhams by **Friday, 28 May** to avoid accruing additional storage fees. If failed to collect by the above date, **W** lots and additional purchases may be transferred to offsite storage at Box Pack & Ship on **Tuesday, 1 June** at the purchaser's risk and expense. Please note, for sold lots removed to Box Pack & Ship there will be transfer and full value protection charges but no daily storage charges due for lots collected within 5 business days of the transfer.

The per-lot charges levied by Box Pack & Ship Services are as follows (plus any applicable sales tax):

## **FURNITURE/LARGE OBJECTS**

Transfer ..... \$85  
Daily storage..... \$10  
Insurance (on Hammer + Premium + tax) 0.9%

## **SMALL OBJECTS**

Transfer ..... \$42.50  
Daily storage..... \$5  
Insurance (on Hammer + Premium + tax) 0.9%

All purchases will be available for collection on **Wednesday, 2 June** from Box Pack & Ship. Collections appointments must be booked 24 hours in advance with Box Pack & Ship (subject to full payment of all outstanding amounts due to Bonhams and Box Pack & Ship).

For more information regarding storage, shipping, or collection from Box Pack & Ship please contact Box Pack & Ship directly at: **+1 323 432 2477** or **daniel@boxpackship.net**

Address:  
3800 S. Main Street  
Los Angeles, CA 90037

All amounts due to Bonhams and all charges due to Box Pack & Ship must be paid by the time of collection of the property. Payment may be made by cash, check, or credit card.

---

## Oversized lots

- 1038
- 1054
- 1076
- 1077
- 1082
- 1083
- 1146
- 1147
- 1149
- 1155
- 1178

# Auction Registration Form

(Attendee / Absentee / Online / Telephone Bidding)

Please circle your bidding method above.

--	--	--	--

**Paddle number (for office use only)**

**General Notice:** This sale will be conducted in accordance with Bonhams Conditions of Sale, and your bidding and buying at the sale will be governed by such terms and conditions. Please read the Conditions of Sale in conjunction with the Buyer's Guide relating to this sale and other published notices and terms relating to bidding. Payment by personal or business check may result in your property not being released until purchase funds clear our bank. Checks must be drawn on a U.S. bank.

**Notice to Absentee Bidders:** In the table below, please provide details of the lots on which you wish to place bids at least 24 hours prior to the sale. Bids will be rounded down to the nearest increment. Please refer to the Buyer's Guide in the catalog for further information relating to instructions to Bonhams to execute absentee bids on your behalf. Bonhams will endeavor to execute bids on your behalf but will not be liable for any errors or non-executed bids.

**Notice to First Time Bidders:** New clients are requested to provide photographic proof of ID - passport, driving license, ID card, together with proof of address - utility bill, bank or credit card statement etc. Corporate clients should also provide a copy of their articles of association / company registration documents, together with a letter authorizing the individual to bid on the company's behalf. Failure to provide this may result in your bids not being processed. For higher value lots you may also be asked to provide a bankers reference.

**Notice to online bidders;** If you have forgotten your username and password for [www.bonhams.com](http://www.bonhams.com), please contact Client Services.

**If successful**

- I will collect the purchases myself
- Please contact me with a shipping quote (if applicable)
- I will arrange a third party to collect my purchase(s)

**Please email the completed Registration Form and requested information to:**

Bonhams Client Services Department  
 7601 W. Sunset Blvd  
 Los Angeles, California 90046  
 Tel +1 (323) 850 7500  
[bids.us@bonhams.com](mailto:bids.us@bonhams.com)

# Bonhams

Sale title: Natural History		Sale date: Tuesday May 25, 2021	
Sale no. 26878		Sale venue: Los Angeles	
<b>General Bid Increments:</b>			
\$10 - 200 .....by 10s		\$10,000 - 20,000 .....by 1,000s	
\$200 - 500 .....by 20 / 50 / 80s		\$20,000 - 50,000 .....by 2,000 / 5,000 / 8,000s	
\$500 - 1,000 .....by 50s		\$50,000 - 100,000 .....by 5,000s	
\$1,000 - 2,000 .....by 100s		\$100,000 - 200,000 .....by 10,000s	
\$2,000 - 5,000 .....by 200 / 500 / 800s		above \$200,000 .....at the auctioneer's discretion	
\$5,000 - 10,000 .....by 500s		The auctioneer has discretion to split any bid at any time.	
Customer Number		Title	
First Name		Last Name	
Company name (to be invoiced if applicable)			
Address			
City		County / State	
Post / Zip code		Country	
Telephone mobile		Telephone daytime	
Telephone evening			
Telephone bidders: indicate primary and secondary contact numbers by writing ① or ② next to the telephone number.			
E-mail (in capitals) _____			
By providing your email address above, you authorize Bonhams to send you marketing materials and news concerning Bonhams and partner organizations. Bonhams does not sell or trade email addresses.			
I am registering to bid as a private client <input type="checkbox"/>		I am registering to bid as a trade client <input type="checkbox"/>	
Resale: please enter your resale license number here _____ We may contact you for additional information.			

SHIPPING	
Shipping Address (if different than above):	
Address: _____	Country: _____
City: _____	Post/ZIP code: _____

**Please note that all telephone calls are recorded.**

Type of bid (A-Absentee, T-Telephone)	Lot no.	Brief description (In the event of any discrepancy, lot number and not lot description will govern.) If you are bidding online there is no need to complete this section.	MAX bid in US\$ (excluding premium and applicable tax) Emergency bid for telephone bidders only*

**You instruct us to execute each absentee bid up to the corresponding bid amount indicated above.**

\* Emergency Bid: A maximum bid (exclusive of Buyer's Premium and tax) to be executed by Bonhams only if we are unable to contact you by telephone or should the connection be lost during bidding.

BY SIGNING THIS FORM YOU AGREE THAT YOU HAVE READ AND UNDERSTAND OUR CONDITIONS OF SALE AND SHALL BE LEGALLY BOUND BY THEM, AND YOU AGREE TO PAY THE BUYER'S PREMIUM, ANY APPLICABLE TAXES, AND ANY OTHER CHARGES MENTIONED IN THE BUYER'S GUIDE OR CONDITIONS OF SALE. THIS AFFECTS YOUR LEGAL RIGHTS.	
Your signature: _____	Date: _____





**Bonhams**  
7601 W. Sunset Boulevard  
Los Angeles, California 90046

---

+1 323 850 7500  
bonhams.com

**AUCTIONEERS SINCE 1793**